

SAGE 300

Manage Your Company  
with One Powerful  
Business Management  
Tool



Today, more than 25,000 companies worldwide trust Sage 300 to manage their business. We've been around for more than 30 years and have seen financial and business management technology take off from MS-DOS systems to cloud hosting. Let us help your business grow to your next stage with our powerful, trustworthy business management platform.

**Designed for Growing Companies**

In order to continue your growth trajectory, you know you need more advanced tools. The home-grown software or carefully modified Excel worksheets of yesteryear aren't working for you anymore. You need a new tool to connect your disparate departments together. You want something flexible and powerful. You need something capable of scaling as you move to new markets, buy and sell companies, and consolidate your corporate structure. You need Sage 300.

**Designed for Scale**

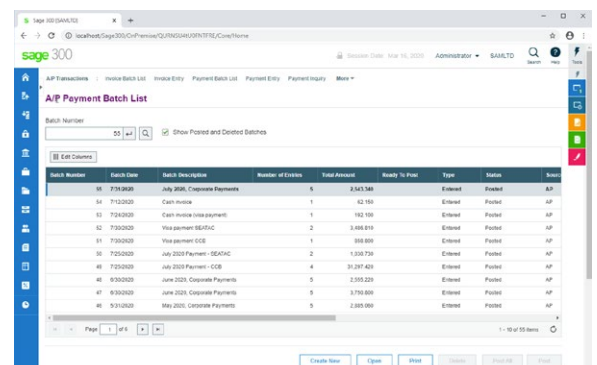
Sage 300 focuses on providing best in class financial tools. We are very good at helping companies manage multiple entities such as subsidiaries or franchises. For companies that operate internationally, we offer multi-currency capabilities and multi-lingual interfaces.

**Add What You Need**

As your business grows, your needs will change which means your BMS software will need to keep up. Sage 300 is uniquely positioned to help your company grow and add needed software confidently. We offer a catalogue of modules to help your business manage everything from finances, to project tracking, to managing sales and inventory. Here is a list of available modules available within the Sage 300 platform for you to add as needed.

**Cloud Deployment**

Give your teams access to key company information wherever they're working from by storing your data in the cloud. Sage 300 works with any cloud provider. Your business partner can help identify which cloud provider (Microsoft Azure, Amazon Web Services, etc...) works best for your needs.



Sage 300 offers a secure, online portal with modern, intuitive UI so your team can work from just about anywhere.

## Finance Tools

### General Ledger

Set up and maintain your general ledger accounts. Enter or transfer transactions from various sources. Print a number of key accounting reports such as general ledger reports, including a chart of accounts, trial balance, posting journal, and transactions listing.

### General Ledger Consolidation

For companies with multiple entities, our General Ledger Consolidation module helps provide the reporting needed to generate key financial reports for the corporate entity.

### Intercompany Transactions

You can set up multiple companies, close books, and report results by company or consolidated company. Automate transactions that affect more than one of your companies. For example, a purchase order from one company will automatically become an Accounts Receivable entry in the other connected company.

### Accounts Receivable

Understand your expected cash flow so you can plan for the future. Send invoices, track customer accounts and provide transaction details on demand.

### Accounts Payable

Set up and maintain your vendor accounts, enter or import transactions from various sources, and print checks. Accounts Payable produces the reports you need to avoid late payment charges, secure vendor discounts, and match cash requirements to cash resources.

### Instant Bank Reconciliations

Bank Reconciliation automates and simplifies the monthly reconciliation process. Detect unrecorded transactions and correct differences between your books and your bank account.

### AP Withholding & Reverse Charges (for Tax Calculations)

Manage tax implications in your invoices like a breeze. AP Withholding helps you direct payable taxes to your tax authority directly while Reverse Charges enable you to calculate the taxes due on an invoice without taxes broken out.

## Project and Vendor Management

### Project and Job Costing

Control project costs better. Track costs and revenue down to the finest details on every project. Manage contractors and subcontractors for their time, and related expenses. Track & monitor original project timelines and status. All costs, payables, and receivables can roll up to each area of the project. Overhead, equipment, and materials are allocated to ensure the project is on time and on budget. *This module integrates with Microsoft Project.*

### Multiple Contacts

Manage accounts and correspondence like a breeze. This module enables you to attribute many stakeholders to an account or project. It also integrates with Microsoft Outlook so you can have the details you need in responding to a customer right there in your Outlook screen.

## Sales Processes

### Send e-invoices

We've partnered with Stripe and PayPal to build a Pay Now button which can be popped onto any invoice you create. Payments, taxes collected, and processing fees will be automatically entered into Sage 300 to save your team time.

### Payment Processing

Process credit and debit card transactions directly in Sage 300. We've partnered with Paya to provide a seamless checkout experience for our customers.

### Order Entry

Manage a transaction throughout its sales lifecycle. Use the Order Entry module to enter orders or sales returns. Print invoices, quotes, order confirmations, picking slips, credit notes, debit notes, and shipping labels.

Order Entry is fully integrated with Inventory Control and Accounts Receivable, so you always know your inventory levels and the status of your customer accounts. It also integrates fully with Project and Job Costing, so you can sell merchandise that includes components such as labor, service, or contacting costs.

### Purchase Order

Automate your purchase order procedures to make putting in an order easier than ever. Enter and process purchase requisitions, purchase orders, receipts, vendor invoices, returns, credit notes, and debit notes. You can also print forms for your requisitions, purchase orders, receipts, returns, and mailing labels.

Transactions in Purchase Orders update item quantities and costs in Inventory Control, and create batches of invoices, credit notes, and debit notes in Accounts Payable.

### Withhold Taxes

Sage 300 allows you to withhold taxes by percentage or by flat amounts in your AP or AR transactions. Record of how much was withheld and by whom to make tax time a little easier.

## Inventory Tools

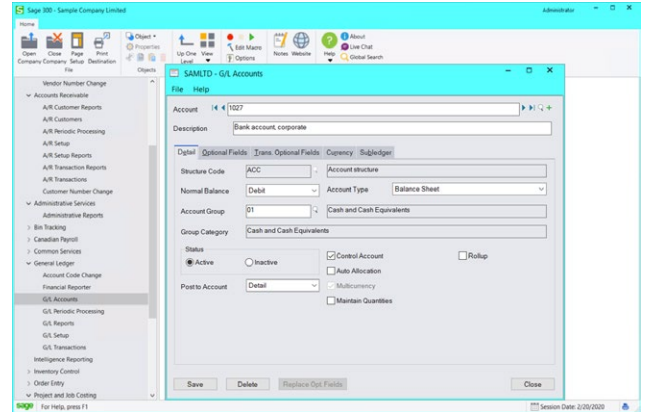
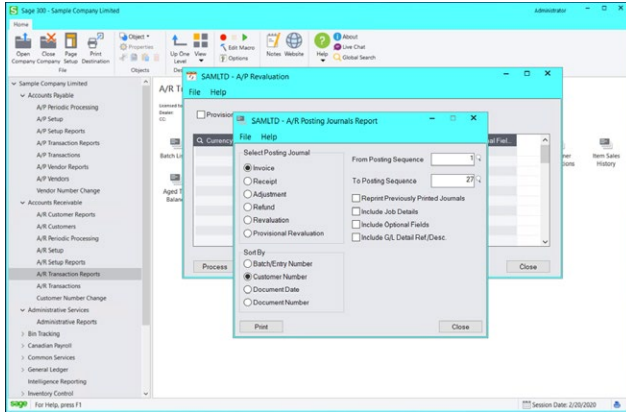
### Inventory Control

Inventory Control maintains detailed perpetual inventory records and produces reports to help you manage your stock effectively.

Regardless of the size and complexity of your business, you can adapt Inventory Control to meet your needs. Inventory Control easily handles the requirements of your existing inventory system and offers many flexible features you can use to manage your inventory effectively.

### Serialized Inventory & Lot Tracking

Automatically generate serial numbers or lot numbers to items to help you keep better control of your stock.



Sage 300 can also be accessed via a desktop application which is the UI most ISVs currently integrate with.

## The Sage 300 Ecosystem

While Sage 300 provides the foundation you need to support a growing business, we believe every business's needs are different. That's why we offer our customers the option to add additional software from Independent Software Vendors, also referred to as ISVs. Our strong support of ISVs started when the product was first introduced in the 90s and we continue to support this ecosystem to this day. Our open API means any modern ISV in the open market has the ability to integrate with Sage 300.

As Sage has evolved, we've partnered with exceptional ISVs to create Sage-endorsed add-ons. These distinguished solutions commit to our extensive QA processes and agree to maintain their code base to support the latest Sage 300 releases.

To see which ISVs we've partnered with, [check out our Marketplace](#).

### Predictable and Affordable Subscription Platform

Sage 300 prides ourselves in providing our customers with a great solution at a great value. Our subscription pricing enables businesses to predict their cost of usage accurately and enables our customers to plan for the future. We offer cost-saving bundles which allows our customers to get the

most out of Sage 300 without having to order every module a-la-carte. For customers who want to add additional Sage 300 modules or users, pricing is clear and implementation is easy.

### Support You Can Count On

Sage works with talented business partners and certified consultants across the US and Canada to help our customers get up and running. Your business partner will help you take care of what's needed to successfully deploy and maintain your Sage 300 platform. At Sage, we love our business partner community and we work closely with them to ensure our customers are well taken care of. We also offer additional resources online to take care of customers. See our [Sage University](#) courses (Sageu.csod.com) and [Knowledgebase](#) (support.na.sage.com) for more support information.

## Why Sage?

Sage is the market leader for integrated accounting, payroll, and payment systems, supporting the ambition of the world's business leaders. Today we work with millions of businesses in all types of industries around the world. Our 13,000 employees serve our customers in 23 countries throughout Europe, Africa, Australia, Asia, and North America. For more information about Sage, please [visit our website](#).