



sage Production
Management

Sage Production Management 2019.1

What's New

Version 6.10.1.0.0

July 2019

© Copyright 2019. All rights reserved. Production Management is a trademark of Scanco Software, LLC. Sage, the Sage logos, and the Sage product and service names mentioned herein are registered trademarks or trademarks of Sage Software, Inc., or its affiliated entities. All other trademarks are the property of their respective owners. The contents herein are summary in nature and subject to change without notification from Scanco Software, LLC. Scanco Software, LLC, accepts no responsibility for inadvertent errors or omissions.

Publish Date: 07.12.2019

Scanco Software, LLC

1000 N Tamiami Trail

Suite 201

Nokomis, FL 34275

Contents

Chapter 1 — 2

Introduction 2

Chapter 2 — 3

What's New in Production Management Version 6.10.1.0.0 — 3

Inventory Management 3

Item Maintenance Orders Tab 3

Library Master 3

Rebuild Production Management Sort Files 3

Production Management 4

Convert Work Order Data 4

Daily Transaction Register 5

Labor Entry and Labor Register/Update 5

Materials Shortage Report 6

Production Management Options 6

Production Management Options Listing 8

Work Ticket Entry Materials Tab 8

Work Ticket Entry Materials Tab Purchase Order Button 8

Work Ticket Entry Copy From 8

Work Ticket Entry Import Materials 9

Work Ticket Entry Release Process 9

Work Ticket Entry Step Copy 9

Work Ticket Entry Steps Tab 10

Work Ticket Entry and Work Ticket Inquiry 10

Work Ticket Printing 10

Purchase Order 11

Purchase Order Entry 11

Chapter 1

Introduction

This document describes the enhancements included in Sage Production Management 2019 Version 6.10.1.0.0. The latest update incorporates everything that was added in in Sage Production Management 2019 Version 6.10.0.0.1. In other words, you only need to install the latest update to acquire the features described for all updates. Depending on your purchase agreement, some features described here may not be available in your product.

Chapter 2

What's New in Production Management Version 6.10.1.0.0

This chapter describes the enhancements added in Sage Production Management 2019.1 Version 6.10.1.0.0. Changes are listed by module.

Depending on your purchase agreement, some features described here may not be available in your product.

Inventory Management

The following changes were made in the Inventory Management module.

Item Maintenance Orders Tab

When the Include Open W/T Materials as Inventory Demand check box in Production Management Options is selected, work ticket records for items assigned as materials on open work tickets now display on the Item Maintenance Orders Tab.

When the Include Open W/T Materials as Inventory Demand check box in Production Management Options is not selected, work ticket records for items assigned as materials on open work tickets do not display on the Item Maintenance Orders Tab. In this situation, work ticket records for items assigned as materials on work tickets display when the work ticket is released.

This feature is documented under reference ID 15018

Library Master

The following changes were made in the Library Master module.

Rebuild Production Management Sort Files

The Required for Work Ticket value is recalculated based on the Include Open W/T Materials as Inventory Demand check box in Production Management Options when Yes is selected from the message *Do you want to recalculate open Work Ticket quantities in the Inventory Masterfile?*

When the Include Open W/T Materials as Inventory Demand check box in Production Management Options is selected and Yes is selected from the message *Do you want to recalculate open Work Ticket quantities in the Inventory Masterfile?*, the Req for W/T field is recalculated to include required values for materials assigned to open work tickets. The Req for W/T field in Item Maintenance includes the quantity required for work ticket materials on open work tickets.

When the Include Open W/T Materials as Inventory Demand check box is not selected and Yes is selected from the message *Do you want to recalculate open Work Ticket quantities in the Inventory Masterfile?*, the Req for W/T field is recalculated to not include required values for materials assigned to open work tickets. The Req for W/T field in Item Maintenance does not include the quantity required for work ticket materials on open work tickets.

The Req for W/T field in Item Maintenance includes the quantity required for work ticket materials on released work tickets, regardless of the setting of the Include Open W/T Materials as Inventory Demand check box in Production Management Options.

When the Include Open W/T Materials as Inventory Demand check box in Production Management Options is selected or cleared and No is selected from the message *Do you want to recalculate open Work Ticket quantities in the Inventory Masterfile?*, the Req for W/T field in Item Maintenance is not recalculated.

This feature is documented under reference ID 15014.

Production Management

The following changes were made in the Production Management module.

Convert Work Order Data

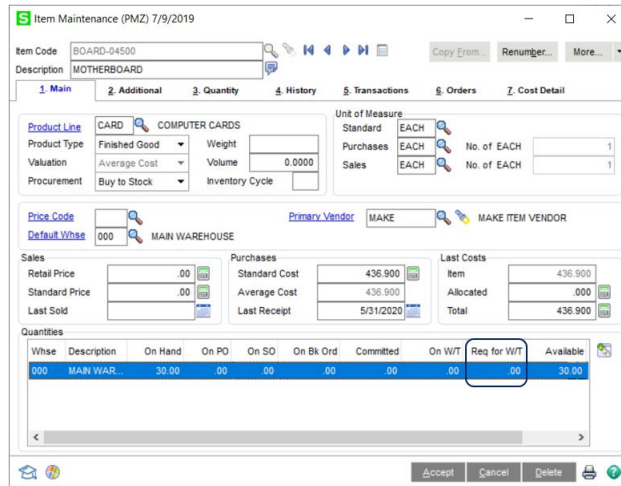
When converting open work orders to Production Management open work tickets, the Req for W/T value is recalculated based on the Include Open W/T Materials as Inventory Demand check box in Production Management Options.

When the Include Open W/T Materials as Inventory Demand check box is selected, the required values for materials assigned to open work tickets are recorded as inventory demand. The Req for W/T field in Item Maintenance includes the quantity required for work ticket materials on open work tickets.

The screenshot shows the 'Item Maintenance (PMZ) 7/9/2019' window. The 'Description' field contains 'MOTHERBOARD'. The 'Product Line' is 'CARD' and 'COMPUTER CARDS'. The 'Unit of Measure' is 'EACH'. The 'Primary Vendor' is 'MAKE'. The 'Sales' section shows 'Retail Price' as .00, 'Standard Price' as .00, and 'Last Sold' as blank. The 'Purchases' section shows 'Standard Cost' as 436.900, 'Average Cost' as 436.900, and 'Last Receipt' as 5/31/2020. The 'Last Costs' section shows 'Item' as 436.900, 'Allocated' as .000, and 'Total' as 436.900. The 'Quantities' table is as follows:

Whse	Description	On Hand	On PO	On SO	On Bk Ord	Committed	On W/T	Req for W/T	Available
000	MAN WAR...	30.00	.00	.00	.00	.00	.00	100.00	70.00

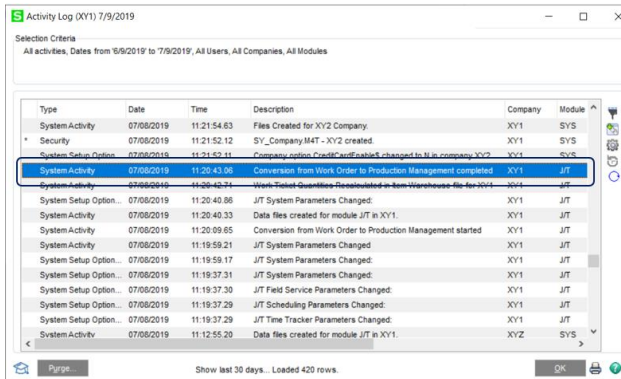
When the Include Open W/T Materials as Inventory Demand check box is not selected, the required values for materials assigned to open work tickets are not recorded as inventory demand. The Req for W/T field in Item Maintenance does not include the quantity required for work ticket materials on open work tickets.



When the Include Open W/T Materials as Inventory Demand check box is not selected, the Req for W/T field includes the quantity required for work ticket materials when the work ticket is released.

This feature is documented under reference ID 15012.

A record now displays in the Activity Log when Work Order data is converted to Production Management data.



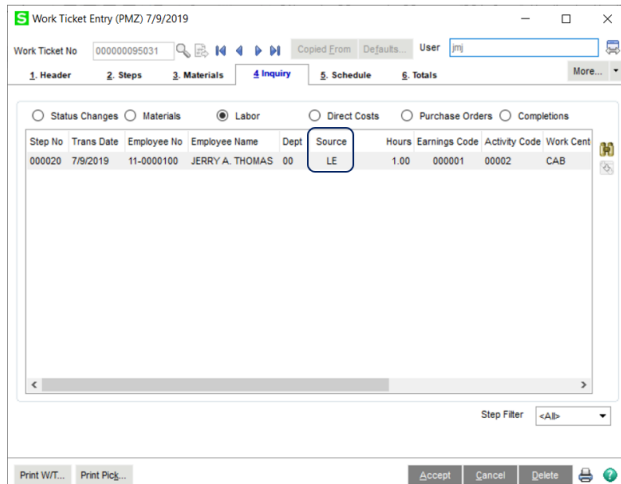
This feature is documented under reference ID 14689

Daily Transaction Register

JT140_WorkTicketNo in GL_DetailPosting is now populated by the Daily Transaction Registers for all transaction updated to work tickets. This feature is documented under reference ID 14542.

Labor Entry and Labor Register/Update

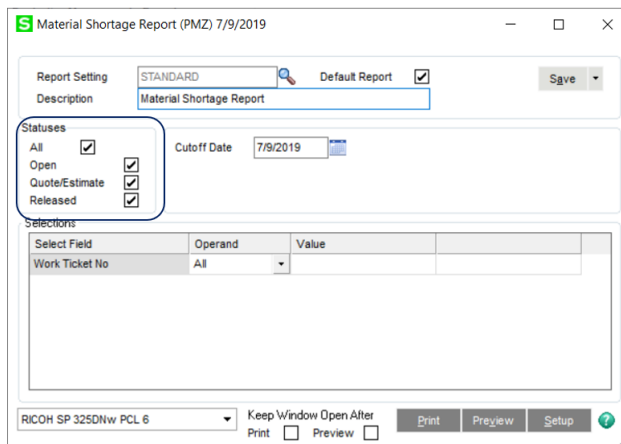
LE displays in the Status field on the Work Ticket Inquiry and Work Ticket Entry Inquiry tab for labor transactions created from Labor Entry or the Labor Register/Update.



This feature is documented under reference ID 14489.

Materials Shortage Report

Status check boxes are now available on the task window to filter data based on work ticket statuses.



Select to print material shortages for materials on open, estimates, released or all work tickets. This feature is documented under reference ID 15042.

Production Management Options

The Include Open W/T Materials as Inventory Demand check box field is now available on the Entry tab.

Production Management Options (PMZ) 7/9/2019

1. Main 2. Entry 3. Forms 4. Printing 5. Quick Print 6. Labor

Batch Processing

Description	Enable	Next Batch
Transaction Entry	<input checked="" type="checkbox"/>	00003
Labor Entry	<input checked="" type="checkbox"/>	00001

Next Automatic Work Ticket No: 000000095031
Next Automatic Service Ticket No: S00000000001
Next Automatic Transaction No: 0000219

Defaults

Default Warehouse for Parent Item: 000
Use Item Default Warehouse for Parent Item:
Default Warehouse for Materials: 000
Use Item Default Warehouse for Materials:
Include Open W/T Materials as Inventory Demand:
Default Make to Stock Work Ticket Class: STK
Default Work Ticket Class for Sales Order Entry:
Explode Subassemblies:
Default General Ledger Accounts: 115-000-000 Inventory - Raw Material

Auto Issue Labor: Backflush Labor:
Auto Issue Materials: Backflush Materials:
Limit Materials Auto Issue to Quantity On Hand:
Auto Issue Materials Shortage Report: Sort by Item Code
Cost Completion Method: Actual
Make To Stock:
Auto Release Work Ticket:

Accept Cancel

After selecting or clearing this check box field, the following message displays.

Sage 100

Changing this parameter will require you to Rebuild Sort files for the Production Management module. Do you wish to Continue?

Yes No

Select yes to continue with the change. Select No to cancel the change.

Warning: You must run the Rebuild Sort files process for the Production Management module and select Yes in the message *When Do you want to recalculate open Work Ticket quantities in the Inventory Masterfile?* in order for the Req for W/T value to be recalculated for materials assigned to existing open work tickets.

This feature is documented under reference ID 14996.

When the Include Open W/T Materials as Inventory Demand check box is selected, the required values for materials assigned to open work ticket are recorded as inventory demand. The Req for W/T field in Item Maintenance includes the quantity required for work ticket materials on open work tickets.

Item Maintenance (PMZ) 7/9/2019

Item Code: BOARD-04500
Description: MOTHERBOARD

1. Main 2. Additional 3. Quantity 4. History 5. Transactions 6. Orders 7. Cost Detail

Product Line: CARD COMPUTER CARDS
Product Type: Finished Good
Valuation: Average Cost
Procurement: Buy to Stock
Inventory Cycle:

Unit of Measure: Standard EACH
Purchases EACH No. of EACH 1
Sales EACH No. of EACH 1

Price Code:
Default Whse: 000 MAIN WAREHOUSE
Primary Vendor: MAKE
MAKE ITEM VENDOR

Sales: Retail Price .00
Standard Price .00
Last Sold

Purchases: Standard Cost 436.900
Average Cost 436.900
Last Receipt 5/31/2020

Last Costs: Item 436.900
Allocated .000
Total 436.900

Quantities

Whse	Description	On Hand	On PO	On SO	On Bk Ord	Committed	On W/T	Req for W/T	Available
000	MAN WAR...	30.00	.00	.00	.00	.00	.00	100.00	70.00

Accept Cancel Delete

When the Include Open W/T Materials as Inventory Demand check box is not selected, the required values for materials assigned to open work tickets are not as inventory demand. The Req for W/T field in Item Maintenance does not include the quantity required for work ticket materials on open work tickets.

Production Management Options Listing

The Include Open W/T Materials as Inventory Demand field displays on the Options Listing. This feature is documented under reference ID 14998

Work Ticket Entry Materials Tab

When the Include Open W/T Materials as Inventory Demand check box in Production Management Options is selected and materials are added to open work tickets from the Work Ticket Entry Materials tab, the required values for materials assigned to open work tickets are recorded as inventory demand. The Req for W/T field in Item Maintenance includes the quantity required for work ticket materials on open work tickets.

When the Include Open W/T Materials as Inventory Demand check box in Production Management Options is not selected and materials are added to open work tickets from the Work Ticket Entry Materials tab, the required values for materials assigned to the open work ticket are not recorded as inventory demand.

In this situation, the Req for W/T field in Item Maintenance does not include the quantity required for materials on open work tickets. The Req for W/T field includes the quantity required for work ticket materials when the work ticket is released.

This feature is documented under reference ID 15001.

Work Ticket Entry Materials Tab Purchase Order Button

The Purchase Order button is enabled for open work tickets when the Include Open W/T Materials as Inventory Demand check box in Production Management Options is selected.

The Purchase Order button is disabled for open work tickets when the Include Open W/T Materials as Inventory Demand checkbox in Production Management Options is not selected. In this situation, work ticket items can only be linked to purchase orders when the work ticket is released.

This feature is documented under reference ID 15000.

Work Ticket Entry Copy From

When the Include Open W/T Materials as Inventory Demand check box in Production Management Options is selected and materials are added to open work tickets using the Work Ticket Entry Copy From feature, the required values for materials assigned to open work tickets are recorded as inventory demand. The Req for W/T field in Item Maintenance includes the quantity required for work ticket materials on open work tickets.

When the Include Open W/T Materials as Inventory Demand check box in Production Management Options is not selected and materials are added to open work tickets using the Work Ticket Entry Copy From feature, the required values for materials assigned to open work tickets are not recorded as inventory demand.

In this situation, the Req for W/T field in Item Maintenance does not include the quantity required for materials on open work tickets. The Req for W/T field includes the quantity required for work ticket materials when the work ticket is released.

This feature is documented under reference ID 15005.

Work Ticket Entry Import Materials

When the Include Open W/T Materials as Inventory Demand check box in Production Management Options is selected and materials are added to open work tickets using the Work Ticket Entry Import Materials feature, the required values for materials assigned to open work tickets are recorded as an inventory demand. The Req for W/T field in Item Maintenance includes the quantity required for work ticket materials on open work tickets.

When the Include Open W/T Materials as Inventory Demand check box in Production Management Options is not selected and materials are added to open work ticket using the Work Ticket Entry Import Materials feature, the required values for materials assigned to open work tickets are not recorded as inventory demand.

In this situation, the Req for W/T field in Item Maintenance does not include the quantity required for materials on open work tickets. The Req for W/T field includes the quantity required for work ticket materials when the work ticket is released.

This feature is documented under reference ID 15007.

Work Ticket Entry Release Process

When the Include Open W/T Materials as Inventory Demand check box in Production Management Options is selected, materials were assigned to the work ticket when the work ticket was assigned an open status and the work ticket is released, the Req for W/T field in Item Maintenance is not updated. In this situation, the Req for W/T field in Item Maintenance was updated when materials were assigned to the work ticket when the work ticket was assigned an open status.

When the Include Open W/T Materials as Inventory Demand check box in Production Management Options is not selected, materials were assigned to the work ticket when the work ticket was assigned an open status and the work ticket is released, the required values for materials assigned to the released work ticket are recorded as inventory demand. In this situation, the Req for W/T field in Item Maintenance includes the quantity required for materials when the work ticket is released.

This feature is documented under reference ID 15004.

Work Ticket Entry Step Copy

When the Include Open W/T Materials as Inventory Demand check box in Production Management Options is selected and materials are added to open work tickets using the Work Ticket Entry Step Copy feature, the required values for materials assigned to open work tickets are recorded as inventory demand. The Req for W/T field in Item Maintenance includes the quantity required for work ticket materials on open work tickets.

When the Include Open W/T Materials as Inventory Demand check box in Production Management Options is not selected and materials are added to open work tickets using the Work Ticket Entry Step Copy feature, the required values for materials assigned to open work tickets are not recorded as inventory demand.

In this situation, the Req for W/T field in Item Maintenance does not include the quantity required for materials on open work tickets. The Req for W/T field includes the quantity required for work ticket materials when the work ticket is released.

This feature is documented under reference ID 15006.

Work Ticket Entry Steps Tab

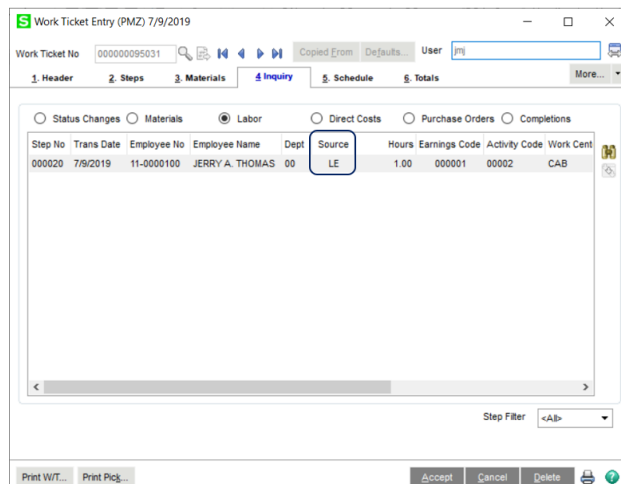
The Purchase Order button is enabled for open work tickets when the Include Open W/T Materials as Inventory Demand check box in Production Management Options is selected.

The Purchase Order button is disabled for open work tickets when the Include Open W/T Materials as Inventory Demand checkbox in Production Management Options is not selected. In this situation, work ticket items can only be linked to purchase orders when the work ticket is released.

This feature is documented under reference ID 14999.

Work Ticket Entry and Work Ticket Inquiry

A Status field displays when the Labor radio button is selected on the Inquiry tab in Work Ticket Entry/Inquiry. LE displays in the Status field for labor transactions created from Labor Entry or the Labor Register/Update.



This feature is documented under reference ID 14490.

Work Ticket Printing

Bar code formulas for the work ticket number are now available on the crystal report. This feature is documented under reference ID 14735.

Purchase Order

The following changes were made in the Purchase Order module.

Purchase Order Entry

When the Include Open W/T Materials as Inventory Demand check box in Production Management Options is selected and materials are added to an open work ticket using the Purchaser Order Entry work ticket linking feature, the required value for materials assigned to the open work ticket is recorded as an inventory demand. The Req for W/T field in Item Maintenance includes the quantity required for work ticket materials on open work tickets.

Purchase order items cannot be linked to work tickets when the Include Open W/T Materials as Inventory Demand checkbox in Production Management Options is not selected. In this situation, purchase order items can only be linked to released work tickets.

This feature is documented under reference ID 15008.