

eBusiness Web Services

Installation and Reference Guide

© 2010 Sage Software, Inc. All rights reserved. Sage, the Sage logos, and the Sage product and service names mentioned herein are registered trademarks or trademarks of Sage Software, Inc., or its affiliated entities. Crystal Reports is the registered trademark and technology of Business Objects SA. All other trademarks are the property of their respective owners.

Contents

Chapter 1 — Introduction 1

- Overview of eBusiness Web Services 1
- How to Use This Installation Guide 2
 - Graphic Conventions 2
 - Text Conventions 3

Chapter 2 — Getting Started 5

- Installing eBusiness Web Services 7
- Uninstalling eBusiness Web Services 15

Chapter 3 — Programming with eBusiness Web Services 17

- Web Services Description Language (WSDL) 18
- Using SOAP Efficiently with eBusiness Web Services 19
- Date and Time Values 20
- Credit Card Numbers 21
- UDFs and Master Developer Fields 22
- Sage eBusiness Web Services Configuration Utility 24
 - Manage Entry Points 27
- Error Handling 28
- Quick Start 32
 - Visual Studio 2008 (Other than Smart Device Projects) 32
 - C# Example 35
 - VB.Net Example 36
 - Visual Studio 2003 or later (Including Smart Device Projects) 37
 - C# Example 38
 - VB.Net example 39
 - Java using NetBeans IDE 40
 - Java Example 41
 - PHP 5 42
 - PHP 5 Example 43

Chapter 4 — Administration 45

- Security and Encryption 45
 - System Configuration Setup 46
 - Company Maintenance Setup 47
 - User Maintenance Setup 48
- Error Logging 48
- Object Cache 49

Permissions 50

Appendix A — APIs 51

GetContractInformation 51
GetDiagnosticInformation 52
GetSalesOrder 53
GetNextSalesOrderNo 54
GetSalesOrderTemplate 55
PreviewSalesOrder 56
CreateSalesOrder 58
UpdateSalesOrder 59
DeleteSalesOrder 60
GetCustomer 61
GetNextCustomerNo 62
CreateCustomer 63
UpdateCustomer 65
DeleteCustomer 66
GetCustomerContact 67
CreateCustomerContact 68
UpdateCustomerContact 70
DeleteCustomerContact 71

Appendix B — Troubleshooting 73

Downloading WSDL - Wrong Host Name 73
 Setting SSL Host Headers 74
 Internet Information Services 6 74
 Internet Information Services 7 76
Downloading WSDL - XSD not Available 77
Error 404 with Internet Information Services (IIS) version 6 78
General Errors 79

Introduction

Overview of eBusiness Web Services

eBusiness Web Services is a SOAP based programming interface that provides read, create, update, and delete functionality for the Sage MAS 90 and 200 sales order, customer, and customer contact entities. eBusiness Web Services is built using Windows Communication Foundation and runs in Internet Information Services (IIS).

The services can be consumed by any development environment that supports SOAP, WSDL, and HTTPS. There is no specific language or operating system requirement for client applications written to consume eBusiness Web Services.

Some popular environments that can consume the services are:

- Visual Studio .NET 2003 or later using C# or VB.NET
- NetBeans IDE 6.5 or later using Java with JAX-WS
- PHP using the built-in SoapClient class

eBusiness Web Services is ideal for applications that run across the Internet, such as ecommerce solutions. The services are used with the HTTPS protocol. This provides a secure and reliable method of communication.

How to Use This Installation Guide



NOTE

This manual is written for the experienced Microsoft Internet Information Services (IIS) Administrator. Knowledge of this area is required.

This installation guide discusses the installation and configuration used by the eBusiness Web Services module. Refer to this installation guide when setting up the eBusiness Web Services module for the first time or when making changes to your network (such as changing Internet Service Providers [ISPs] or moving the software to another server).

For a complete listing of operating system requirements, see the Supported Platform Matrix in the Support area of the Sage Online Web site at: www.sagesoftwareonline.com

Graphic Conventions

The following icons are used throughout this manual to indicate different types of information.



The **NOTE** symbol is followed by additional information about a topic.



The **WARNING** symbol is followed by information to help you avoid costly mistakes.

Text Conventions

The following table describes the text conventions used in this manual.

Text Convention	Explanation
Menus	<p>Menus are shown in this format: Select menu > menu task name.</p> <p>Examples:</p> <ul style="list-style-type: none"> • Select File menu > Change Company. • Select General Ledger Budget menu > Budget Maintenance.
Bold font	<p>Indicates text entered at a field or text selected at a field.</p> <p>Examples:</p> <ul style="list-style-type: none"> • At the Value field, type a search value, such as 01, for the lookup. • In the Filter window, to delete a filter, select <none> at a filter's Column field.
<i>Italic font</i>	<p>Indicates references to other manuals.</p> <p>Example:</p> <ul style="list-style-type: none"> • For more information about installing demo data, refer to your <i>Installation and System Administrator's Guide</i>.

Getting Started

eBusiness Web Services is available on the Sage MAS 90 and 200 Application CD-ROMs. This chapter covers the installation process for eBusiness Web Services. For installation information regarding the Sage MAS 90 or 200 software, refer to your applicable *Installation and System Administrator's Guide*. For information on the specific operating system requirements, see the Supported Platform Matrix in the Support area of the Sage Online Web site at: www.sagesoftwareonline.com

The eBusiness Web Services installation process is more complicated than standard modules. Every effort has been made to make this process as simple as possible; however, before you start, you must know some important information about your network configuration.

eBusiness Web Services must be installed on the same machine where Sage MAS 90 or 200 resides. Internet Information Services must be installed before installing eBusiness Web Services.

The installation process consists of the following

- 1 Install a server certificate for Internet Information Services.

IIS 6.0:

<http://www.microsoft.com/technet/prodtechnol/WindowsServr2003/Library/IIS/89c7ef2f-f7d6-483c-8b08-ae0c6584dd4d.msp>

IIS 7.0:

[http://technet.microsoft.com/en-us/library/cc732230\(WS.10\).aspx](http://technet.microsoft.com/en-us/library/cc732230(WS.10).aspx)

- 2 Ensure that the .NET Framework 3.0 Service Pack 1 or .NET Framework 3.5 is installed.

3 Enable required extensions and features.

IIS 6.0: Allow the ASP.NET v2.0.50727 Web Service Extension through Internet Information Services Manager

IIS 7.0: Install the .NET Framework 3.0 WCF HTTP Activation feature from Programs and Features

Install the Windows Process Activation Service with all features from Programs and Features

4 Install eBusiness Web Services.

5 Enable Web Services for the system.

6 Enable Web Services for the company.

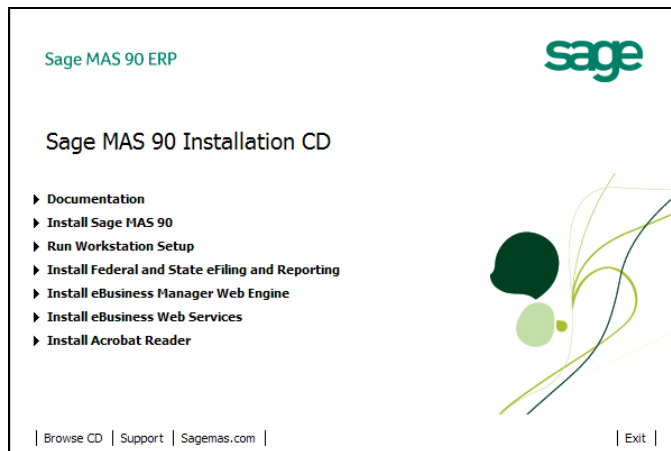
7 Enable Web Services for the user.

Installing eBusiness Web Services

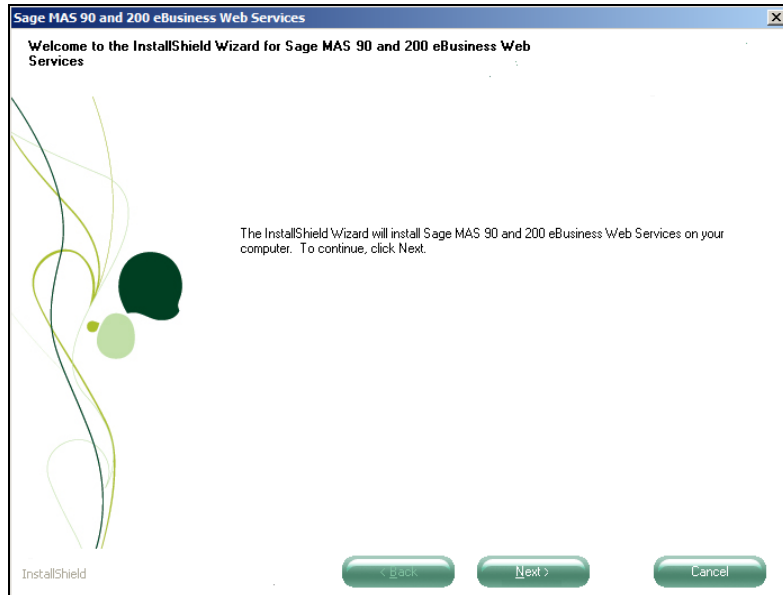
After installing Sage MAS 90 or 200 with an eBusiness Web Services enabled activation key, you are ready to install eBusiness Web Services.

To begin the installation process

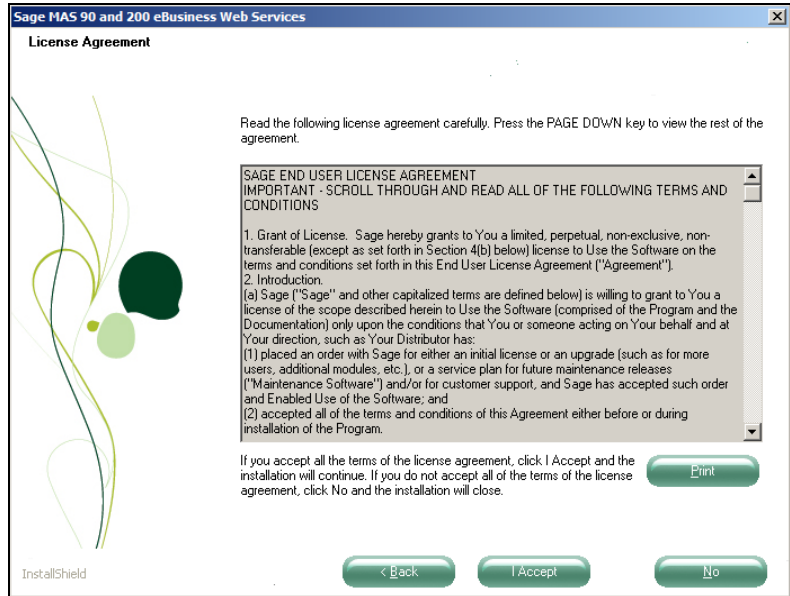
- 1 Place the Application CD-ROM in the CD-ROM drive of the Windows Server. If Autorun is enabled, the installation window appears; otherwise, select Start menu > Run and type D:\Autorun.exe, where D:\ is the CD-ROM drive. Click Install eBusiness Web Services to begin the installation.



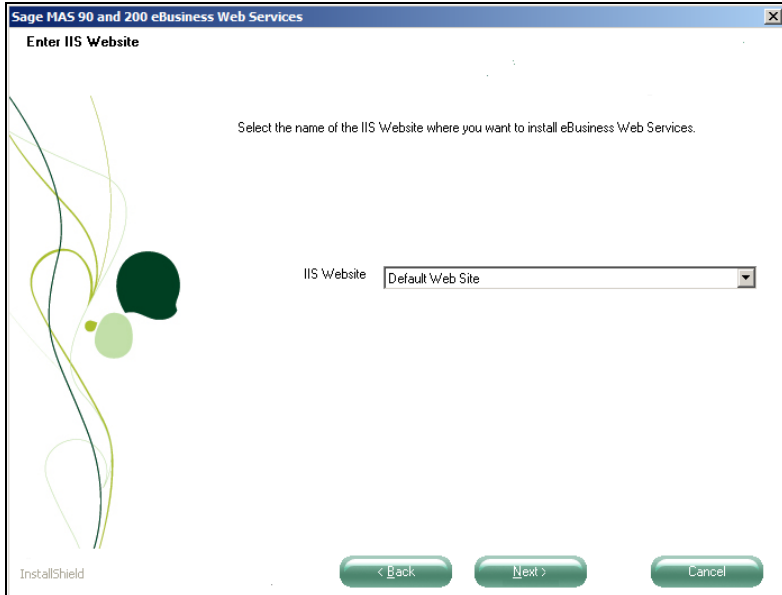
- 2 Click Next to proceed with the installation.



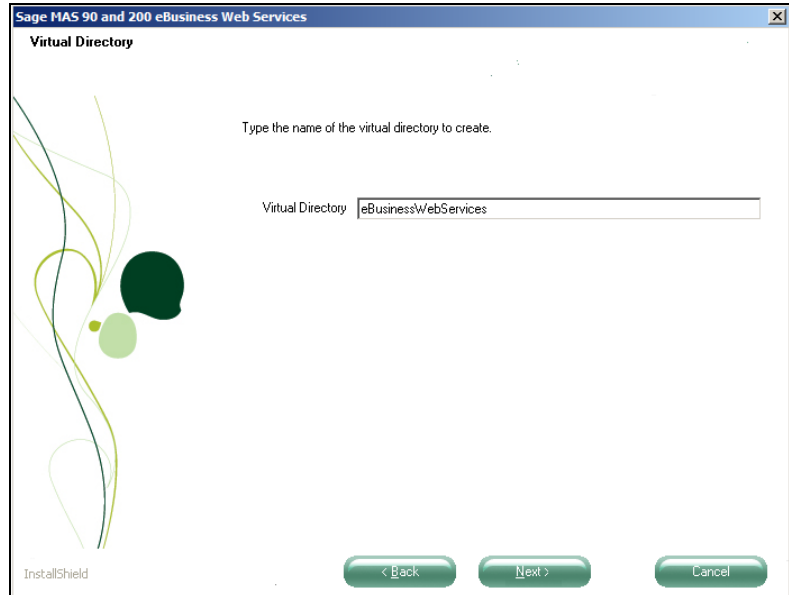
- 3 Click I Accept to accept the terms of the license agreement. You must accept the agreement to continue with the installation.



- 4 Select the name of the Internet Information Services (IIS) Web site where you want to install eBusiness Web Services, and then click Next.

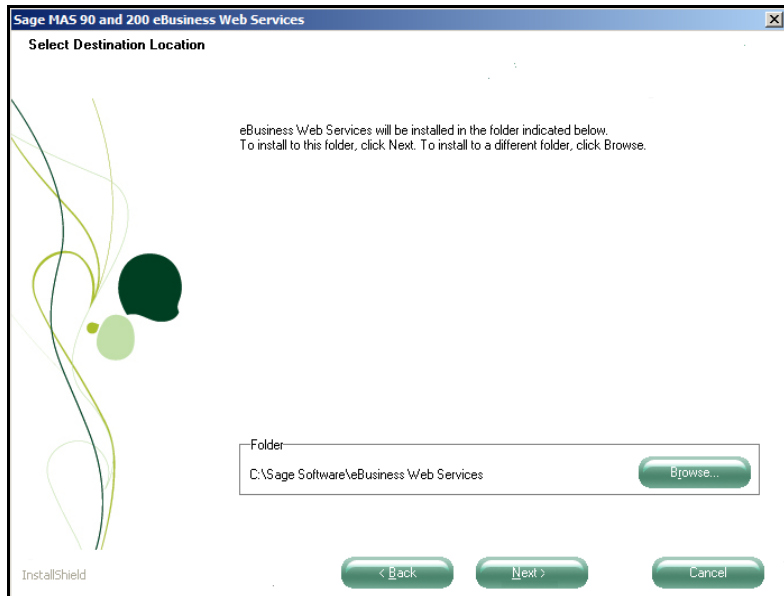


- 5 The default name of the virtual directory to be created appears. Accept this name or type a new name. Click Next.



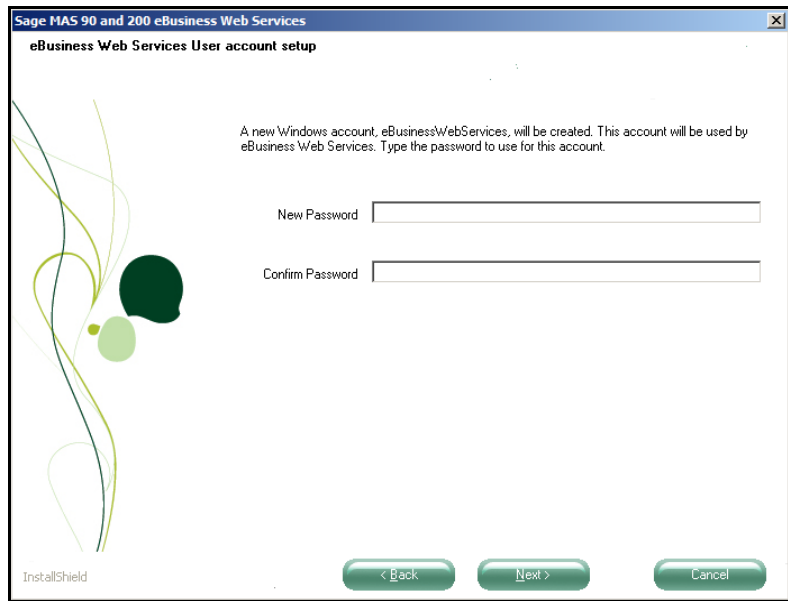
- 6 Select the folder to install eBusiness Web Services. Click Browse to view a listing of all drives and folders available on the server. After selecting the path, click Next.

The folder must be located on a local drive. Network drives and UNC's should not be used.

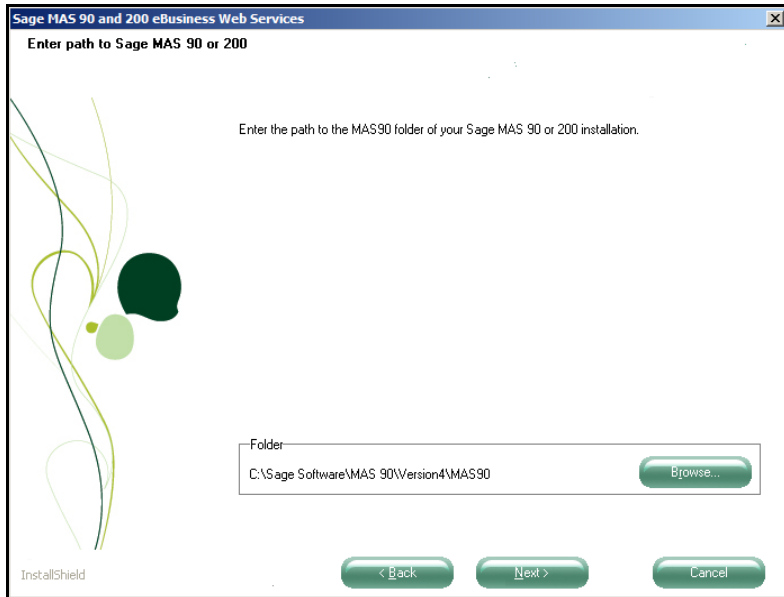


- 7 Type the password for the eBusiness Web Services user account. Click Next.

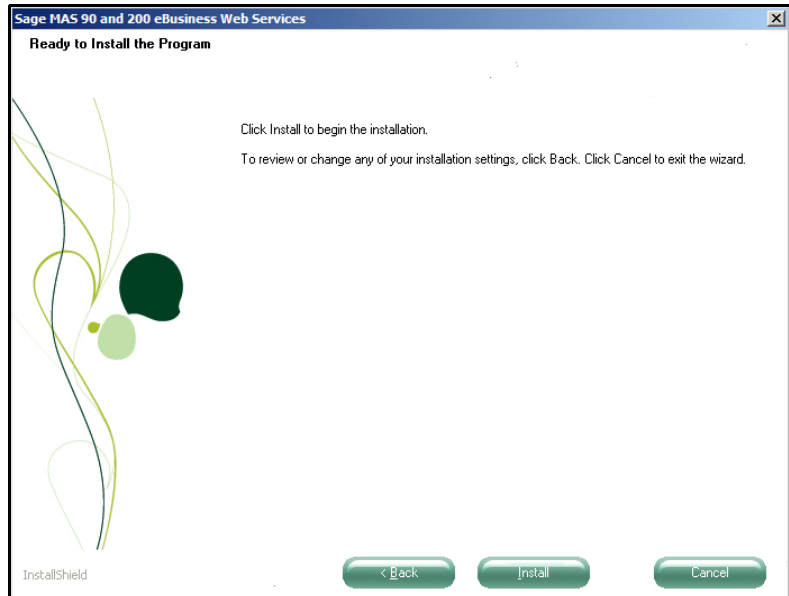
A Windows user account named eBusinessWebServices is required to run the eBusiness Web Services service. If this account already exists, a different page appears where you are only required to enter your password.



- 8 Select the path to your Sage MAS 90 or 200 installation. This path must contain the MAS90 folder and an eBusiness Web Services enabled activation key. Click Next.



- 9 Click Install to begin the installation.



Uninstalling eBusiness Web Services

You must first uninstall eBusiness Web Services prior to uninstalling Sage MAS 90 or 200.

Programming with eBusiness Web Services

eBusiness Web Services provides a platform independent programming interface. Any programming language in any development environment and operating system that has support for SOAP, WSDL, and HTTPS can be used to call eBusiness Web Services.

How a particular environment invokes the web services operations from a programming perspective, is not defined by web services; therefore, we cannot document how to call eBusiness Web Services from all possible development environments. For examples of calling eBusiness Web Services from some popular environments, see Quick Start on page 32.

All eBusiness Web Services operations are stateless and atomic. An operation either completes successfully or does not complete at all. For example, if a network connection is dropped during the CreateSalesOrder operation, and a sales order has been partially transmitted, the operation will not create a partial sales order; it will not create a sales order at all.

eBusiness Web Services operations must be called from a SOAP client. How the client is created depends on the development platform, but all clients must point to the URL where eBusiness Web Services resides.

eBusiness Web Services operations utilize SOAP faults when they error. The development environment for the client application determines how to capture and handle the faults. Most environments require that SOAP faults be handled by catching exceptions through the use of try/catch blocks.

For instructions on creating a SOAP client and for examples of how to use try/catch blocks for some popular development environments, see Quick Start on page 32.

Web Services Description Language (WSDL)

eBusiness Web Services uses the WSDL standard to describe the services it provides. The use of WSDL allows a programmer to point to the URL where eBusiness Web Services resides and begin programming against the web services. The programmer does not need to concern themselves with forming proper SOAP/XML requests when using a development platform capable of consuming WSDL.

eBusiness Web Services provides two sets of WSDL:

- Full: Targeted for Microsoft Visual Studio 2008's Service Reference (sometimes referred to as a WCF client).
- Basic: Targeted for all other environments, including Microsoft Visual Studio's Web Reference, Sun Java's JAX-WS client, and PHP's integrated SoapClient.

The WSDL that a client obtains is determined by the entry point of the URL. eBusiness Web Services provides two default entry points:

- MasService.svc - Full WSDL
- MasBasicWsdL.svc - Basic WSDL

Administrators can define other entry points by using the advanced options in the Sage MAS 90 and 200 eBusiness Web Services configuration utility.

Choosing the appropriate WSDL to consume will help ensure that the client application generates efficient SOAP requests and will help reduce the complexity of any generated proxy classes.

For example, a Visual Studio 2008 developer can point a Service Reference to <https://server/ebusinesswebservices/masservice.svc?wsdl> while a Java developer can point JAX-WS to <https://server/ebusinesswebservices/masbasicwsdl.svc?wsdl>.

Using SOAP Efficiently with eBusiness Web Services

eBusiness Web Services uses the W3C standard SOAP protocol to communicate between the client and server.

It is the use of SOAP that helps ensure that requests can traverse the Internet and that operations can be called from numerous platforms such as PCs, PDAs, and SmartPhones.

SOAP is an XML based protocol and; therefore can be quite bandwidth intensive if not used with care. eBusiness Web Services can be configured and programmed to reduce the amount of bandwidth used.

For example, as part of the response from a call to the GetCustomer operation, the following snippet of XML may be sent:

```
<Customer xmlns="http://mas90.sage.com/ws"
xmlns:i="http://www.w3.org/2001/XMLSchema-instance">
  <OtherFields />
  <ARDivisionNo>01</ARDivisionNo>
  <AddressLine1>2131 N. 14th Street</AddressLine1>
  <AddressLine2>Suite 100</AddressLine2>
  <AddressLine3 />
  <AgingCategory1>0</AgingCategory1>
  <AgingCategory2>0</AgingCategory2>
  <AgingCategory3>0</AgingCategory3>
  <AgingCategory4>0</AgingCategory4>
  <AvgDaysOverDue>0</AvgDaysOverDue>
```

eBusiness Web Services can be configured to not emit XML for empty strings and zero values in server responses. When configured with these options, the above snippet would appear as follows:

```
<Customer xmlns="http://mas90.sage.com/ws"
xmlns:i="http://www.w3.org/2001/XMLSchema-instance">
  <OtherFields />
  <ARDivisionNo>01</ARDivisionNo>
  <AddressLine1>2131 N. 14th Street</AddressLine1>
  <AddressLine2>Suite 100</AddressLine2>
```

As the example demonstrates, bandwidth is significantly reduced when the data returned contains many empty strings and zero values. A side effect of not emitting empty strings and zero values is that these values will appear as null values at the client. The client application must be able to process the null values returned to it.

eBusiness Web Services also allows specific fields to be blocked for read operations. When a field is blocked, XML for the field is never emitted. Blocking fields will generally yield the most bandwidth reduction, but care must be taken not to block fields that either the client application or eBusiness Web Services require to function properly. The eBusiness Web Services reference section can be used to determine the fields required for a particular operation, see APIs on page 51.

eBusiness Web Services has no control over XML generation at the client. Reducing bandwidth for client requests is the sole responsibility of the client application. Most development platforms will not emit XML for a Sage MAS 90 and 200 entity field if the field value is set to null. Setting unneeded fields to null at the client is generally the most effective way of reducing bandwidth in client requests.

Date and Time Values

Sage MAS 90 and 200 natively store dates and times in separate fields. eBusiness Web Services converts these separate fields into one field that returns the SOAP standard DateTime type.

For example, native Sage MAS 90 sales orders contain the following two fields:

```
AuthorizationDate$  
AuthorizationTime$
```

eBusiness Web Services converts these two fields into a single field called:

```
AuthorizationDateTime
```


Some native data in Sage MAS 90 and 200 only have a date component. For example, the sales order OrderDate\$ field has no corresponding time field. Sage MAS 90 and 200 will still return these fields as a DateTime type, but will distinguish date-only fields from date-time fields by omitting "Time" from the field name. In the case of OrderDate\$, eBusiness Web Services exposes this field as OrderDate rather than OrderDateTime.

When a date and time is blank in Sage MAS 90 and 200, null will be returned by eBusiness Web Services when the date and time are read through a Get operation.

Update and Create operations treat null values as "not set"; eBusiness Web Services performs no operation at all for a field when it is null. Setting a DateTime value to null during an Update operation will not set the Sage MAS 90 and 200 date and time to blank. Instead, a special NullDateTime value must be used. This value can be obtained by calling the GetContractInformation operation. This value is constant and only needs to be obtained once by the client application.

Credit Card Numbers

Sage MAS 90 and 200 natively store credit card numbers as encrypted values. eBusiness Web Services automatically handles the Sage MAS 90 and 200 level encryption/decryption of credit card numbers.

For example, native Sage MAS 90 sales orders contain the following field:

EncryptedCreditCardNo\$

eBusiness Web Services converts this field into a field called:

CreditCardNo

At the web services level, CreditCardNo is an unencrypted field. At the data transport level, SSL is used to encrypt all data sent across the wire, including CreditCardNo.

As a security feature, full credit card numbers can never be read from eBusiness Web Services. Instead, only an obscured number with the last four digits is returned, (for example, *****1234).

In addition, CVV2 values can never be read from eBusiness Web Services. Null is always returned for CVV2 values.

Credit Card Numbers and CVV2 values can be written to sales orders through eBusiness Web Services by setting the CreditCardNo and CreditCardCVV2No fields of the sales order.

Credit card numbers cannot be written to customers through eBusiness Web Services. The error WS_FieldNotAllowed will be returned when attempting to set the primary credit card number for a customer through eBusiness Web Services.

UDFs and Master Developer Fields

UDFs and Master Developer fields are not exposed by default. UDFs can be automatically exposed by setting the AutoExposeUDFs option to Yes in eBusiness Web Services - Advanced Settings. UDFs and Master Developer fields can also be selectively exposed by adding them to the eBusiness Web Services - Advanced Settings Additional Fields tab. Master Developer fields cannot be automatically exposed; they must always be defined in the Additional Fields tab.

Both UDFs and Master Developer fields are exposed in the OtherFields collection of an entity. OtherFields contains a collection of Field objects. The Field object contains two fields:

- **MasFieldName:** The name of the UDF or Master Developer Field (for example, "UDF_NICKNAME\$")
- **Value:** The value of the UDF. Value is always a string type, even when the native type for the field in Sage MAS 90 or 200 is numeric.

To read a field, the OtherFields collection must be iterated through and MasFieldName compared against the desired field name before reading the Value field. Do not to assume that a particular field will always be at the same index position in the collection.

To change a field value for an Update operation, the OtherFields collection must be iterated through and MasFieldName must be compared against the appropriate field name before setting the field's Value field. The appropriate field may not be found if it has been explicitly blocked for read access in the advanced configuration settings. If this is the case, and write access is allowed for the field, a new Field object must be added to the OtherFields collection with MasFieldName and Value set to their appropriate values.

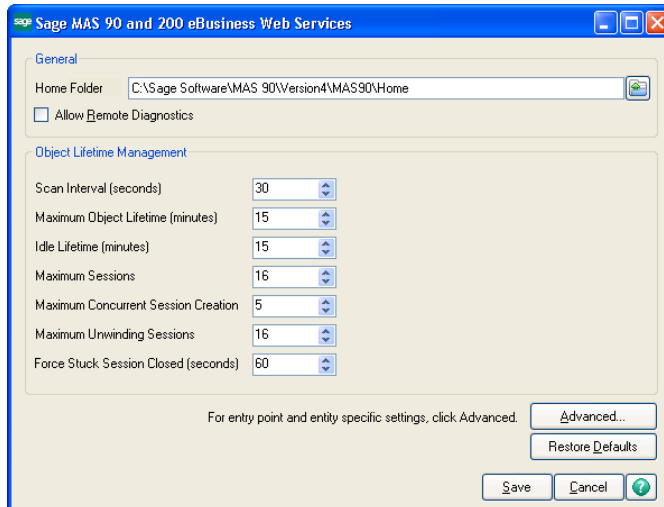
To set a field value during a Create operation using an entity instantiated at the client, a new Field object must be added to the OtherFields collection with MasFieldName and Value set to their appropriate values. The OtherFields collection will also need to be instantiated using the appropriate collection type for the platform.

For example, to set UDF_NICKNAME\$ before calling CreateSalesOrder, the following C# code can be used with a Microsoft Service Reference:

```
masws.SalesOrder salesOrder = new masws.SalesOrder();
salesOrder.OtherFields = new BindingList<masws.Field>();
masws.Field udfField = new masws.Field();
udfField.MasFieldName = "UDF_NICKNAME$";
udfField.Value = "JOEY";
salesOrder.OtherFields.Add(udfField);
```

Sage eBusiness Web Services Configuration Utility

Use the Sage MAS 90 and 200 eBusiness Web Services configuration utility to further define your settings for eBusiness Web Services.



Click Advanced on the Sage MAS 90 and 200 eBusiness Web Services window to access eBusiness Web Services - Advanced Settings. Use the advanced settings in this window to modify settings for specific entry points and entities.

Fields may be blocked by clearing the Allow Read or Allow Write check boxes.

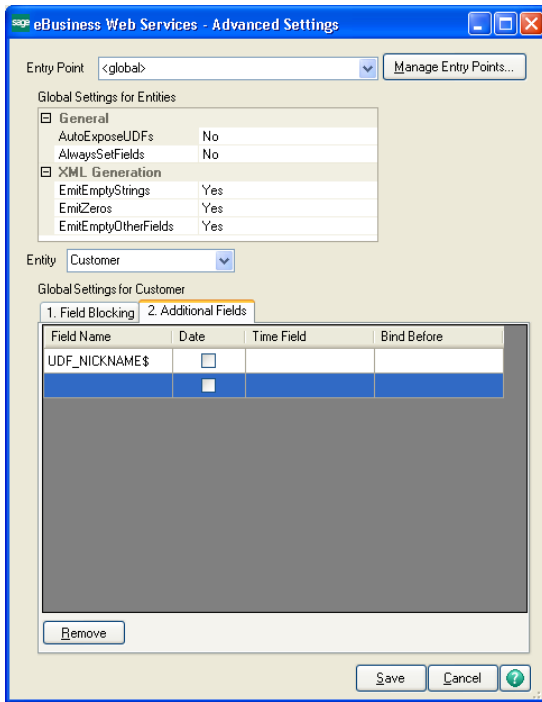
The screenshot shows the 'eBusiness Web Services - Advanced Settings' window. At the top, the 'Entry Point' is set to '<global>' and the 'Entity' is set to 'Customer'. Below this, there are two sections for 'Global Settings for Entities' and 'Global Settings for Customer'. The 'Global Settings for Customer' section has two tabs: '1. Field Blocking' (selected) and '2. Additional Fields'. The 'Field Blocking' tab contains a table with the following data:

Field	Allow Read	Allow Write
AddressLine1	<input checked="" type="checkbox"/>	<input checked="" type="checkbox"/>
AddressLine2	<input checked="" type="checkbox"/>	<input checked="" type="checkbox"/>
AddressLine3	<input checked="" type="checkbox"/>	<input checked="" type="checkbox"/>
AgingCategory1	<input checked="" type="checkbox"/>	<input checked="" type="checkbox"/>
AgingCategory2	<input checked="" type="checkbox"/>	<input checked="" type="checkbox"/>
AgingCategory3	<input checked="" type="checkbox"/>	<input checked="" type="checkbox"/>
AgingCategory4	<input checked="" type="checkbox"/>	<input checked="" type="checkbox"/>
ARDivisionNo	<input checked="" type="checkbox"/>	<input checked="" type="checkbox"/>
AvgDaysOverDue	<input checked="" type="checkbox"/>	<input checked="" type="checkbox"/>
AvgDaysPaymentInvoice	<input checked="" type="checkbox"/>	<input checked="" type="checkbox"/>
BalanceForward	<input checked="" type="checkbox"/>	<input checked="" type="checkbox"/>
BatchFax	<input checked="" type="checkbox"/>	<input checked="" type="checkbox"/>

At the bottom of the window, there are 'Save', 'Cancel', and a help icon buttons.

Fields can be exposed by explicitly defining them on the Additional Fields tab. When fields are explicitly defined, the fields will appear at the bottom of the grid on the Field Blocking tab where they can also be explicitly blocked.

Any field that exists in Sage MAS 90 and 200 for an entity can be defined on the Additional Fields tab. The field does not have to be a UDF.

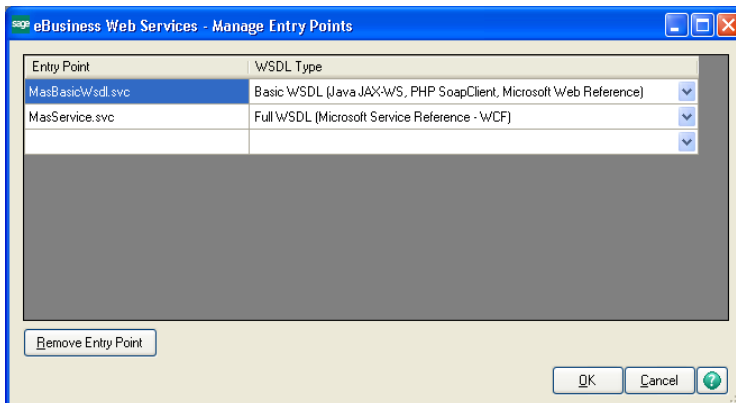


Manage Entry Points

Entry points can be created and removed from eBusiness Web Services - Manage Entry Points.

Entry points are typically used to hold application specific settings. For example, two clients may be used with eBusiness Web Services. One client can allow the XML for zero values and empty strings to be omitted, while the other client can require the XML to be emitted. Both clients can be served by the same installation of eBusiness Web Services by defining two entry points with different settings for EmitEmptyStrings and EmitZeros.

An entry point must be suffixed with .svc and must have a WSDL type specified.



Error Handling



NOTE
eBusiness Web Services does not report warnings from the Sage MAS 90 and 200 application.

eBusiness Web Services uses SOAP faults to return errors. SOAP faults contain a `faultcode` element that will be set to an error code and a `faultstring` that will be set to a descriptive error message. In addition, SOAP faults generated by the eBusiness Web Services component will include a `MasFault` element in the detail element of the SOAP fault.

The `MasFault` element contains the following items:

ClassName: The name of the class that generated the error. This item can be blank.

MemberName: The name of the method or property that generated the error. This item can be blank.

ErrorMessage: The error message. This item is always set.

The `faultstring` element will usually contain a more descriptive message than `ErrorMessage` as `faultstring` contains additional detail from the eBusiness Web Services component, while `ErrorMessage` is typically an error message directly from Sage MAS 90 or 200.

ErrorCode: The error code. This item is always set. Both `ErrorCode` and `faultcode` will contain the same error code.

Most languages handle SOAP faults through the use of try/catch blocks.

For examples of how to catch eBusiness Web Services SOAP faults for some popular development environments, see Quick Start on page 32.

The following error codes are specific to eBusiness Web Services

WS_AlreadyExists

"Record already exists."

This error occurs when a create method is called and the record being created already exists. This error can generally be ignored if it is received while retrying a timed out create request as it indicates that the previous call was successful.

WS_EventLog

"Could not write to Windows event log."

All eBusiness Web Services errors are written to the server's Windows Event Log. This error occurs when eBusiness Web Services is unable to write to the Windows Event Log. This is an abnormal condition that may be caused by a permissions or installation issue.

WS_Exception

"An exception occurred."

This error occurs when an unexpected exception occurs while executing an eBusiness Web Services method. The exception detail is not returned by eBusiness Web Services for security reasons. The exception detail can be viewed in the Windows Event Log on the server hosting eBusiness Web Services.

WS_FieldMissing

"The {Business Object} field {Field Name} does not exist in this record."

This error occurs when the record contained in Sage MAS 90 or 200 does not contain the same schema as defined in eBusiness Web Services. This error will occur when an invalid additional field is defined using the Sage MAS 90 and 200 eBusiness Web Services configuration utility. The error may also occur when data is corrupted in Sage MAS 90 or 200.

WS_FieldNotAllowed

"Field does not exist or is blocked."

This error occurs when a blocked field is written to or when a field does not exist.

WS_HaveSession
"Session already exists."

This is an eBusiness Web Services internal error and represents an abnormal condition. Report the error to Sage Customer Support.

WS_NullValue
"Value is null."

This error occurs when a required value, such as a key value, is not set.

WS_Unknown
"Unknown error."

This error occurs when eBusiness Web Services is unable to obtain an error code from Sage MAS 90 or 200. This error represents an abnormal condition. Report the error to Sage Customer Support.

The following are common error codes that are not specific to eBusiness Web Services

CI_NoKey
"Record does not exist."

This error occurs when the record for a get or update operation does not exist.

SY_InvalidPassword
"The user logon or password does not match or the user logon is not enabled for web services."

or
"Blank passwords cannot be used with web services."

This error occurs when the logon credentials for Sage MAS 90 or 200 are incorrect. This error will occur when the user name does not exist, the password is incorrect, or the user name is not enabled for web services.

SY_NoAccess

"You are not authorized to perform this action."

This error occurs when the logon does not have proper rights in Sage MAS 90 or 200 role security to perform an operation. For information on the rights required to perform an operation, see APIs on page 51.

This error may also occur when either the Sage MAS 90 or 200 system or company is not enabled for web services. When this occurs, the SOAP faultstring will be:

"Web services are not enabled for the system."

or

"Web services are not enabled for this company."

The ErrorMessage under MasFault will remain:

"You are not authorized to perform this action."

SY_UserLocked

"This user account has been locked. See your system administrator."

This error occurs when the user account has the locked flag set in Sage MAS 90 or 200.

For a complete list of Sage MAS 90 or 200 error codes, refer to the TRSG available on Sage Online at: www.sagesoftwareonline.com

Quick Start

This section is designed to get you started with eBusiness Web Services fast and easily. This section assumes that eBusiness Web Services has been installed with the default settings.

The following code examples are available on the CD in the Documents\ eBusiness Web Services Examples folder.

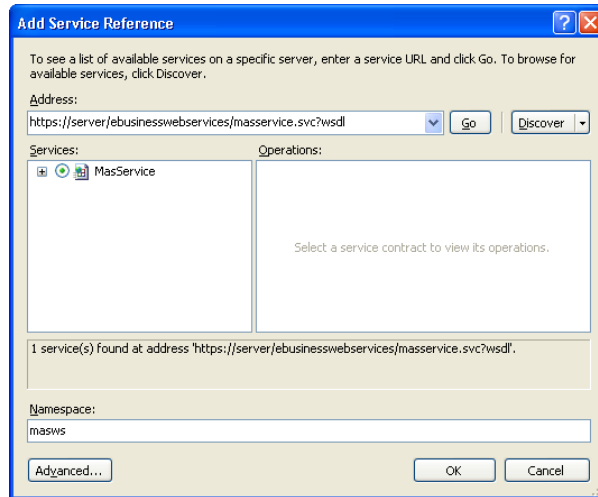
Visual Studio 2008 (Other than Smart Device Projects)

- 1 Create a new project.
- 2 From the menu, choose Project/Add Service Reference.

If Add Service Reference is not listed on the menu, you may be developing a Smart Device application or using an older version of Visual Studio. eBusiness Web Services can still be used if Add Web Reference is available. For more information, see Visual Studio 2003 or later (Including Smart Device Projects) on page 37.

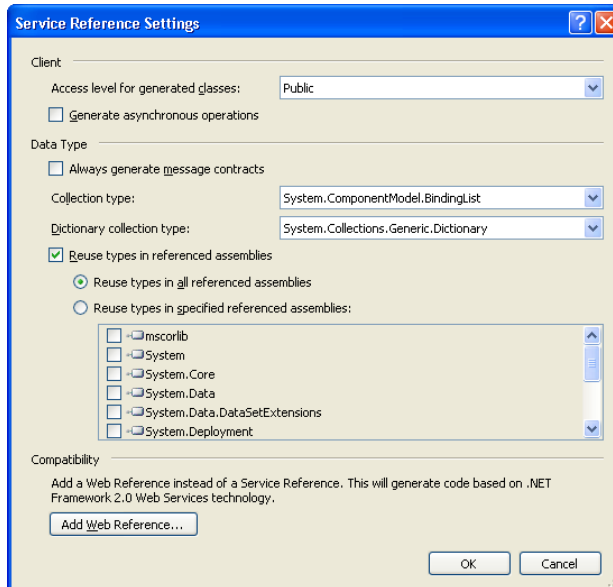
- 3 At the Address field, enter:
`https://<servername>/ebusinesswebservices/masservice.svc?wsdl`
- 4 Click Go. MasService will appear in the Services section.

5 Type masws at the Namespace field.



6 Click the Advanced button.

- 7 Select `System.ComponentModel.BindingList` at the Collection type field.



- 8 Click OK to close the Service Reference Settings window.

- 9 Click OK to close the Add Service Reference window.

Your project is now set up to use eBusiness Web Services.

C# Example

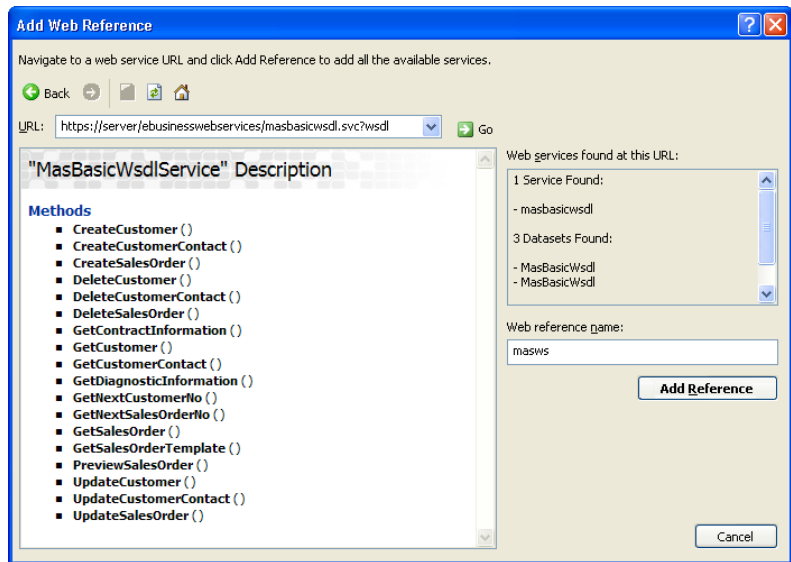
```
// An example of how to create a sales order using ABC demo data
public void CreateSalesOrder()
{
    // Create a sales order object
    masws.SalesOrder salesOrder = new masws.SalesOrder();
    // Create the lines collection for the sales order
    salesOrder.Lines = new BindingList<masws.SalesOrderLine>();
    // Set the customer information for the sales order
    salesOrder.ARDivisionNo = "01";
    salesOrder.CustomerNo = "ABF";
    // Create a sales order line object
    masws.SalesOrderLine salesOrderLine = new masws.SalesOrderLine();
    // Set the line information
    salesOrderLine.ItemCode = "1001-HON-H252";
    salesOrderLine.QuantityOrdered = 1;
    // Add the line to the sales order
    salesOrder.Lines.Add(salesOrderLine);
    // Create a logon object
    masws.Logon logon = new masws.Logon();
    // Set the username and password to be used for MAS90/200 Web Services
    logon.Username = "webservices";
    logon.Password = "password";
    // Create a string with the company code to use
    string companyCode = "ABC";
    // Use try/catch blocks to catch any errors
    try
    {
        // Create a client to communicate with MAS90/200 Web Services
        masws.MasServiceClient client = new masws.MasServiceClient();
        // Get a new sales order number
        salesOrder.SalesOrderNo = client.GetNextSalesOrderNo(logon, companyCode);
        // Create the sales order
        client.CreateSalesOrder(logon, companyCode, salesOrder);
        // Display the order number
        MessageBox.Show("Created order# " + salesOrder.SalesOrderNo);
    }
    // Catch MAS90/200 specific faults that occur at the web server
    catch (System.ServiceModel.FaultException<masws.MasFault> ex)
    {
        // Display the error message
        MessageBox.Show(ex.Message);
    }
    // Catch other exceptions (e.g. a connectivity error)
    catch (Exception ex)
    {
        // Display the error message
        MessageBox.Show(ex.Message);
    }
}
}
```

VB.Net Example

```
' An example of how to create a sales order using ABC demo data
Sub CreateSalesOrder()
    ' Create a sales order object
    Dim salesOrder As masws.SalesOrder = New masws.SalesOrder
    ' Create the lines collection for the sales order
    salesOrder.Lines = New System.ComponentModel.BindingList(Of masws.SalesOrderLine)
    ' Set the customer information for the sales order
    salesOrder.ARDivisionNo = "01"
    salesOrder.CustomerNo = "ABF"
    ' Create a sales order line object
    Dim salesOrderLine As masws.SalesOrderLine = New masws.SalesOrderLine
    ' Set the line information
    salesOrderLine.ItemCode = "1001-HON-H252"
    salesOrderLine.QuantityOrdered = 1
    ' Add the line to the sales order
    salesOrder.Lines.Add(salesOrderLine)
    ' Create a logon object
    Dim logon As masws.Logon = New masws.Logon
    ' Set the username and password to be used for MAS90/200 Web Services
    logon.Username = "webservices"
    logon.Password = "password"
    ' Create a string with the company code to use
    Dim companyCode As String = "ABC"
    ' Use try/catch blocks to catch any errors
    Try
        ' Create a client to communicate with MAS90/200 Web Services
        Dim client As masws.MasServiceClient = New masws.MasServiceClient
        ' Get a new sales order number
        salesOrder.SalesOrderNo = client.GetNextSalesOrderNo(logon, companyCode)
        ' Create the sales order
        client.CreateSalesOrder(logon, companyCode, salesOrder)
        ' Display the order number
        MessageBox.Show("Created order# " + salesOrder.SalesOrderNo)
    ' Catch MAS90/200 specific faults that occur at the web server
    Catch ex As System.ServiceModel.FaultException(Of masws.MasFault)
        ' Display the error message
        MessageBox.Show(ex.Message)
    ' Catch other exceptions (e.g. a connectivity error)
    Catch ex As Exception
        ' Display the error message
        MessageBox.Show(ex.Message)
    End Try
End Sub
```


Visual Studio 2003 or later (Including Smart Device Projects)

- 1 Create a new project.
- 2 From the menu choose Project/ Add Web Service.
- 3 Enter `https://<servername>/ebusinesswebservices/masbasicwsdl.svc?wsdl` at the URL field.
- 4 Click Go. MasBasicWsdService should now be listed in the Web services found at this URL section.
- 5 Type `masws` at the Web reference name field.



- 6 Click Add Reference.

Your project is now set up to use eBusiness Web Services.

C# Example

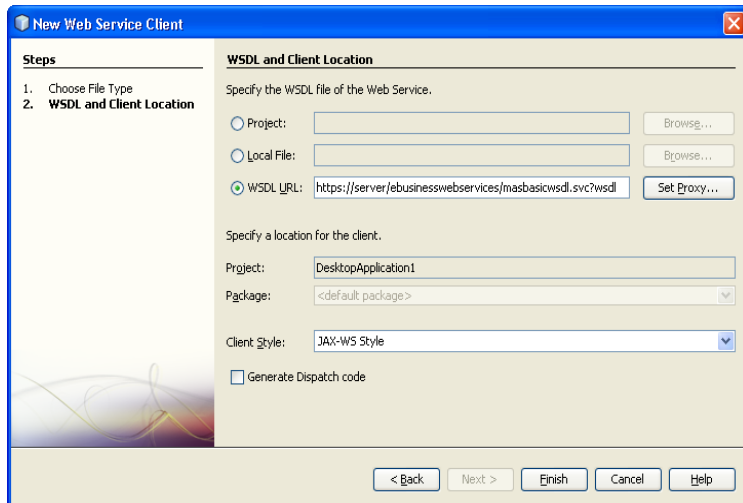
```
// An example of how to create a sales order using ABC demo data
public void CreateSalesOrder()
{
    // Create a sales order object
    masws.SalesOrder salesOrder = new masws.SalesOrder();
    // Create the lines collection
    List<masws.SalesOrderLine> lines = new List<masws.SalesOrderLine>();
    // Set the customer information for the sales order
    salesOrder.ARDivisionNo = "01";
    salesOrder.CustomerNo = "ABF";
    // Create a sales order line object
    masws.SalesOrderLine salesOrderLine = new masws.SalesOrderLine();
    // Set the line information - note that numeric properties must have their
    // corresponding "Specified" property set to true
    salesOrderLine.ItemCode = "1001-HON-H252";
    salesOrderLine.QuantityOrdered = 1;
    salesOrderLine.QuantityOrderedSpecified = true;
    // Add the line to the lines collection then attach the lines to the sales order
    lines.Add(salesOrderLine);
    salesOrder.Lines = lines.ToArray();
    // Create a logon object
    masws.Logon logon = new masws.Logon();
    // Set the username and password to be used for MAS90/200 Web Services
    logon.Username = "webservices";
    logon.Password = "password";
    // Create a string with the company code to use
    string companyCode = "ABC";
    // Use try/catch blocks to catch any errors
    try
    {
        // Create a client to communicate with MAS90/200 Web Services
        masws.MasBasicWsdlService client = new masws.MasBasicWsdlService();
        // Get a new sales order number
        salesOrder.SalesOrderNo = client.GetNextSalesOrderNo(logon, companyCode);
        // Create the sales order
        client.CreateSalesOrder(logon, companyCode, salesOrder);
        // Display the order number
        MessageBox.Show("Created order# " + salesOrder.SalesOrderNo);
    }
    // Catch MAS90/200 specific faults that occur at the web server
    catch (System.Web.Services.Protocols.SoapException ex)
    {
        // Display the error message
        MessageBox.Show(ex.Message);
    }
    // Catch other exceptions (e.g. a connectivity error)
    catch (Exception ex)
    {
        // Display the error message
        MessageBox.Show(ex.Message);
    }
}
```

VB.Net example

```
' An example of how to create a sales order using ABC demo data
Sub CreateSalesOrder()
    ' Create a sales order object
    Dim salesOrder As masws.SalesOrder = New masws.SalesOrder
    ' Create the lines collection
    Dim lines As List(Of masws.SalesOrderLine) = New List(Of masws.SalesOrderLine)
    ' Set the customer information for the sales order
    salesOrder.ARDivisionNo = "01"
    salesOrder.CustomerNo = "ABF"
    ' Create a sales order line object
    Dim salesOrderLine As masws.SalesOrderLine = New masws.SalesOrderLine
    ' Set the line information - note that numeric properties must have their
    ' corresponding "Specified" property set to true
    salesOrderLine.ItemCode = "1001-HON-H252"
    salesOrderLine.QuantityOrdered = 1
    salesOrderLine.QuantityOrderedSpecified = True
    ' Add the line to the lines collection then attach the lines to the sales order
    lines.Add(salesOrderLine)
    salesOrder.Lines = lines.ToArray
    ' Create a logon object
    Dim logon As masws.Logon = New masws.Logon
    ' Set the username and password to be used for MAS90/200 Web Services
    logon.Username = "webservices"
    logon.Password = "password"
    ' Create a string with the company code to use
    Dim companyCode As String = "ABC"
    ' Use try/catch blocks to catch any errors
    Try
        ' Create a client to communicate with MAS90/200 Web Services
        Dim client As masws.MasBasicWsdlService = New masws.MasBasicWsdlService
        ' Get a new sales order number
        salesOrder.SalesOrderNo = client.GetNextSalesOrderNo(logon, companyCode)
        ' Create the sales order
        client.CreateSalesOrder(logon, companyCode, salesOrder)
        ' Display the order number
        MessageBox.Show("Created order# " + salesOrder.SalesOrderNo)
    ' Catch MAS90/200 specific faults that occur at the web server
    Catch ex As System.Web.Services.Protocols.SoapException
        ' Display the error message
        MessageBox.Show(ex.Message)
    ' Catch other exceptions (e.g. a connectivity error)
    Catch ex As Exception
        ' Display the error message
        MessageBox.Show(ex.Message)
    End Try
End Sub
```

Java using NetBeans IDE

- 1 Create a new project.
- 2 Right click the project and select New /Web Service Client.
- 3 In the New Web Service Client page, select the WSDL URL option and enter the following:
`https://<servername>/ebusinesswebservices/masbasicwsdl.svc?wsdl`
- 4 Click Finish.



Your project is now set up to use eBusiness Web Services.

Java Example

```
// An example of how to create a sales order using ABC demo data
public void CreateSalesOrder()
{
    // Create a sales order object
    com.sage.mas90.ws.SalesOrder salesOrder = new com.sage.mas90.ws.SalesOrder();
    // Create the lines collection
    salesOrder.setLines(new com.sage.mas90.ws.ArrayOfSalesOrderLine());
    // Set the customer information for the sales order
    salesOrder.setARDivisionNo("01");
    salesOrder.setCustomerNo("ABF");
    // Create a sales order line object
    com.sage.mas90.ws.SalesOrderLine salesOrderLine = new com.sage.mas90.ws.SalesOrderLine();
    // Set the line information
    salesOrderLine.setItemCode("1001-HON-H252");
    salesOrderLine.setQuantityOrdered(1.0);
    // Add the line to the lines collection then attach the lines to the sales order
    salesOrder.getLines().getSalesOrderLine().add(salesOrderLine);
    // Create a logon object
    com.sage.mas90.ws.Logon logon = new com.sage.mas90.ws.Logon();
    // Set the username and password to be used for MAS90/200 Web Services
    logon.setUsername("webservices");
    logon.setPassword("password");
    // Create a string with the company code to use
    String companyCode = "ABC";
    // Use try/catch blocks to catch any errors
    try
    {
        // Create a client to communicate with MAS90/200 Web Services
        com.sage.mas90.ws.MasBasicWsdService service = new com.sage.mas90.ws.MasBasicWsdService();
        com.sage.mas90.ws.IMasService client = service.getBasicHttpBindingIMasService();
        // Get a new sales order number
        salesOrder.setSalesOrderNo(client.getNextSalesOrderNo(logon, companyCode));
        // Create the sales order
        client.createSalesOrder(logon, companyCode, salesOrder);
        // Display the order number
        JOptionPane.showMessageDialog(null, "Created order# " + salesOrder.getSalesOrderNo());
    }
    // Catch MAS90/200 specific faults that occur at the web server
    catch (com.sage.mas90.ws.IMasServiceGetNextSalesOrderNoMasFaultFaultMessage ex)
    {
        // Display the error message
        JOptionPane.showMessageDialog(null, ex.getMessage());
    }
    // Catch MAS90/200 specific faults that occur at the web server
    catch (com.sage.mas90.ws.IMasServiceCreateSalesOrderMasFaultFaultMessage ex)
    {
        // Display the error message
        JOptionPane.showMessageDialog(null, ex.getMessage());
    }
    // Catch other exceptions (e.g. a connectivity error)
    catch (Exception ex)
    {
        // Display the error message
        JOptionPane.showMessageDialog(null, ex.getMessage());
    }
}
}
```

PHP 5

PHP 5 is a loosely typed scripting language that does not generate proxies for its SOAP client. There is no setup procedure required to use eBusiness Web Services with PHP.

PHP 5 Example

```

function CreateSalesOrder()
{
    // Set the customer information for the sales order
    $salesOrder->ARDivisionNo = "01";
    $salesOrder->CustomerNo = "ABF";
    // Set the line information
    $salesOrder->Lines[0]->ItemCode = "1001-HON-H252";
    $salesOrder->Lines[0]->QuantityOrdered = 1;
    // Set the username and password to be used for MAS90/200 Web Services
    $logon->Username = "webservices";
    $logon->Password = "password";
    // Create a string with the company code to use
    $companyCode = "ABC";
    // Use try/catch blocks to catch any errors
    try
    {
        // Create a client to communicate with MAS90/200 Web Services
        $client = new SoapClient("https://server/ebusinesswebservices/masbasicwsdl.svc?wsdl");
        // Get a new sales order number
        $response = $client->GetNextSalesOrderNo(array(
            "logon"=>$logon,
            "companyCode"=>$companyCode
        ));
        $salesOrder->SalesOrderNo = $response->GetNextSalesOrderNoResult;
        // Create the sales order
        $client->CreateSalesOrder(array(
            "logon"=>$logon,
            "companyCode"=>$companyCode,
            "salesOrder"=>$salesOrder
        ));
        // Display the order number
        echo "Created order# $salesOrder->SalesOrderNo";
    }
    // Catch all exceptions
    catch (Exception $ex)
    {
        // Display error message
        echo $ex->getMessage();
    }
}

```


Administration

Security and Encryption

eBusiness Web Services must be used with SSL encryption to be secure. The URL for eBusiness Web Services will start with https:// if SSL is being used. Sage MAS 90 and 200 eBusiness Web Services should never be used without SSL encryption.

Access to the Sage MAS 90 and 200 system from eBusiness Web Services is controlled at three levels:

- System
- Company
- User

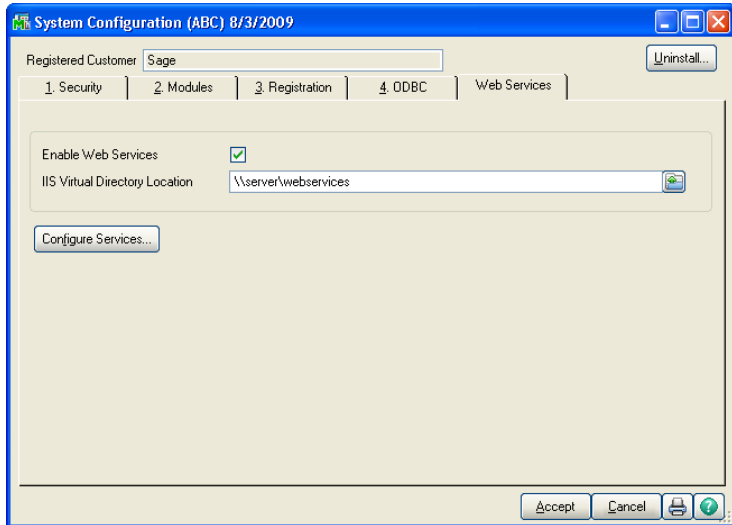
eBusiness Web Services works with Sage MAS 90 and 200 role based security. eBusiness Web Services calls are treated as maintenance actions (Create, Modify, Remove, or View) in the context of role based security.

To determine which tasks must be enabled for a particular web services method, see APIs on page 51.

For example, to allow creation of a new customer, in Library Master Role Maintenance, click the Tasks tab and select Accounts Receivable > Maintenance/Data Entry > Customer Maintenance > Create.

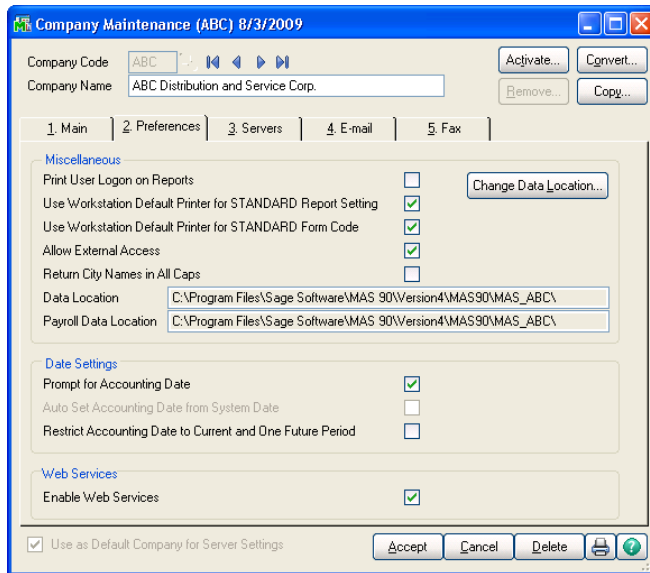
System Configuration Setup

eBusiness Web Services must be enabled for the system by selecting the Enable Web Services check box in Library Master Setup menu > System Configuration.



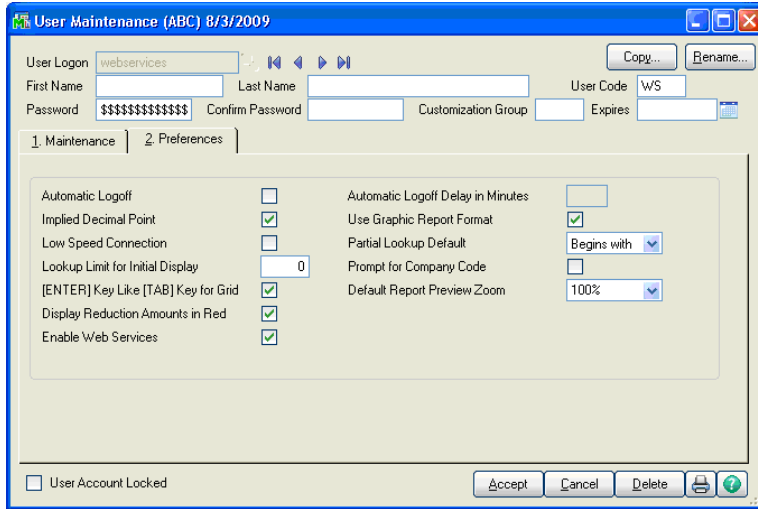
Company Maintenance Setup

eBusiness Web Services must be enabled for each company where access is required by selecting the Enable Web Services check box in Library Master Main menu > Company Maintenance.



User Maintenance Setup

eBusiness Web Services must be enabled for each user that is allowed access to the Sage MAS 90 and 200 system through eBusiness Web Services by selecting the Enable Web Services check box in Library Master Main menu > User Maintenance.



Error Logging

eBusiness Web Services logs all errors to the Windows Event Log in the eBusiness Web Services log.

The details of unexpected exceptions are hidden from the web services client for security reasons. When these errors occur, the client will receive the message: "An exception occurred." in the SOAP fault. The full details of the error will be available in the Windows Event Log.

Object Cache

eBusiness Web Services uses an object cache to handle requests efficiently. When a request is made, eBusiness Web Services checks the cache to see if existing objects are available to fulfill the request. If objects are available then they are used. If objects are not available, then new objects are created and are added to the cache after the request is completed.

Objects that are added to the cache are available only to the same user name that created the objects. For this reason, the cache is more efficient if a common user name and password is used by the client application. For example, most ecommerce sites have no need to log onto eBusiness Web Services with multiple user names as the ecommerce users purchasing items over the Internet will not have a Sage MAS 90 or 200 account. Therefore, an ecommerce site would use a dedicated account to access eBusiness Web Services.

Certain maintenance operations in the Sage MAS 90 and 200 products, such as adding a UDF, require exclusive use of the Sage MAS 90 and 200 data files. Due to the use of caching, eBusiness Web Services can have data files open even if there is no activity. The eBusiness Web Services application pool should be stopped through Internet Information Services Manager before running operations that require exclusive use of the Sage MAS 90 and 200 data files. Stopping the application pool will clear the cache and reject incoming web services requests that could interfere with the maintenance operations.

Permissions

eBusiness Web Services runs in the context of the eBusinessWebServices user account. The eBusinessWebServices user account requires permissions to the Sage MAS 90 or 200 application and the files that the Sage MAS 90 or 200 application accesses. The eBusiness Web Services installer will attempt to set these permissions; however, permissions may need to be set manually under certain circumstances such as when a new alternate directory is created.

The eBusinessWebServices user account must have the following permissions set:

- Full Control of the MAS90 base directory
- Full Control of all alternate directories that will be accessed from eBusiness Web Services
- Read & Execute permissions for the Program Files\Common Files\Sage\Common Components folder
- Read & Execute permissions of the eBusiness Web Services installation folder
- List Folder, Read Data, and Delete permissions for the Windows\Temp folder

APIs

GetContractInformation

Parameters

None

Return Value

Type: ContractInformation

General information about the web services contracts.

Remarks

The returned value contains three fields:

ContractVersion: This field returns an integer value that represents the version of the eBusiness Web Services operations and data contracts.

A client application can use ContractVersion to determine if it is compatible with the instance of eBusiness Web Services it is connected to without the need to download the complete WSDL.

Newer versions of eBusiness Web Services will generally be backwards compatible with clients designed for older versions of eBusiness Web Services.

Our goal is to maintain backwards compatibility; however, design considerations may cause incompatibilities to arise from time to time.

AssemblyVersion: This field returns a string that represents the version of the eBusiness Web Services assembly.

NullDateTime: The value from this field can be used to explicitly set an entity's DateTime field to blank.

GetDiagnosticInformation

Parameters

None

Return Value

Type: DiagnosticInformation

Statistical data that may aid in diagnosing performance issues, etc.

Remarks

This method is for use by Sage Customer Support as a diagnostic tool and is not intended to be called by applications.

Remote access to this method is turned off by default. Remote access to this method should only be enabled when requested by a Sage Customer Support representative. Remote access can be enabled using the Sage MAS 90 and 200 eBusiness Web Services configuration utility.

GetSalesOrder

Parameters

logon

Type: Logon

The user name and password to be used for the operation

companyCode

Type: string

The company from which to obtain the sales order

salesOrderNo

Type: string

The number of the sales order to retrieve

Return Value

Type: SalesOrder

The requested sales order

Remarks

The returned value may be modified and used with the UpdateSalesOrder operation. For more information, see UpdateSalesOrder on page 59.

For information on the structure and data contained in the SalesOrder type, refer to SO_SalesOrderHeader and SO_SalesOrderDetail in File Layouts and Program Information.

Security Requirements

In Library Master Role Maintenance, click the Tasks tab and select Sales Order > Maintenance/Data Entry > Sales Order Entry > View.

GetNextSalesOrderNo

Parameters

logon

Type: Logon

The user name and password to be used for the operation

companyCode

Type: string

The company from which to obtain the next sales order number

Return Value

Type: string

The next sales order number

Remarks

The returned value can be used to set the SalesOrderNo field of a SalesOrder object before calling CreateSalesOrder.

Each call to GetNextSalesOrderNo will return a new sales order number for the specified company regardless of whether the number from a previous call has been used or not.

Security Requirements

In Library Master Role Maintenance, click the Tasks tab and select Sales Order > Maintenance/Data Entry > Sales Order Entry > Create.

GetSalesOrderTemplate

Parameters

logon

Type: Logon

The user name and password to be used for the operation

companyCode

Type: string

The company from which to obtain the sales order template

arDivisionNo

Type: string

The division number of the customer

customerNo

Type: string

The customer number to use for the template

Return Value

Type: SalesOrder

An empty sales order with the default customer information set

Remarks

This operation retrieves default customer information that can be used for display on a data entry form. Sales order fields that are blank or zero in the Sage MAS 90 and 200 system are returned as null in order to reduce network traffic.

The sales order returned from this operation can be modified and used for the CreateSalesOrder operation; however, it is generally more efficient to create a new SalesOrder object to pass to CreateSalesOrder.

For information on the structure and data contained in the SalesOrder type, refer to SO_SalesOrderHeader and SO_SalesOrderDetail in File Layouts and Program Information.

Security Requirements

In Library Master Role Maintenance, click the Tasks tab and select Sales Order > Maintenance/Data Entry > Sales Order Entry. Select Create and View.

PreviewSalesOrder

Parameters

logon

Type: Logon

The user name and password to be used for the operation

companyCode

Type: string

The company from which to preview the sales order

salesOrder

Type: SalesOrder

The sales order to preview

Return Value

Type: SalesOrder

A sales order that includes the default values and totals that would be committed if the submitted sales order was passed to the CreateSalesOrder operation

Remarks

This operation allows a sales order to be previewed before being submitted to the CreateSalesOrder operation. For example, it would be appropriate for an ecommerce application to call PreviewSalesOrder and display the order totals to the end user before final checkout.

The sales order returned by this operation is not intended to be passed to the CreateSalesOrder operation. Read-only fields can be set on the returned value. This will cause an error if submitted to the CreateSalesOrder operation.

For information on the structure and data contained in the SalesOrder type, refer to SO_SalesOrderHeader and SO_SalesOrderDetail in File Layouts and Program Information.

Security Requirements

In Library Master Role Maintenance, click the Tasks tab and select Sales Order > Maintenance/Data Entry > Sales Order Entry. Select Create and View or Modify and View.

CreateSalesOrder

Parameters

logon

Type: Logon

The user name and password to be used for the operation

companyCode

Type: string

The company in which to create the sales order

salesOrder

Type: SalesOrder

The sales order to create

Return Value

None

Remarks

This operation creates a sales order in the Sage MAS 90 and 200 system. The SalesOrderNo field of salesOrder must be set to create a sales order. The GetNextSalesOrderNo operation can be used to obtain a sales order number.

Network connectivity issues can cause errors with web services. When this occurs, it can be difficult to determine if the call completed successfully, failed, or never made it to the server.

When a connectivity error occurs with this operation, such as a timeout error, CreateSalesOrder should be called again with the same sales order. It is important that the value for SalesOrderNo remain the same as in the first call. If the previous call to CreateSalesOrder completed successfully, the new call will error out and MasFault will have ErrorCode set to WS_AlreadyExists. This error can be ignored as it indicates the previous call successfully created the sales order. For more information, see Error Handling on page 28.

For information on the structure and data contained in the SalesOrder type, refer to SO_SalesOrderHeader and SO_SalesOrderDetail in File Layouts and Program Information.

Security Requirements

In Library Master Role Maintenance, click the Tasks tab and select Sales Order > Maintenance/Data Entry > Sales Order Entry > Create.

UpdateSalesOrder

Parameters

logon

Type: Logon

The user name and password to be used for the operation

companyCode

Type: string

The company from which to update the sales order

salesOrder

Type: SalesOrder

The sales order to update

Return Value

None

Remarks

This operation updates a sales order in the Sage MAS 90 and 200 system.

A sales order must first be obtained from the GetSalesOrder operation. This sales order can then be modified and passed to the UpdateSalesOrder operation.

The SalesOrderNo field of salesOrder determines which Sage MAS 90 and 200 sales order is updated. SalesOrderNo must not be modified after the call to GetSalesOrder.

Do not modify the LineKey field of any of the SalesOrderLine objects contained in the Lines collection of salesOrder. The LineKey field is an advisory field that is used to determine lines that have been updated, inserted, or deleted from the sales order. Modifying the LineKey field will result in inefficiencies with the UpdateSalesOrder operation.

"Allow Read" should remain enabled for the LineKey field of the SalesOrderLine entity when using the advanced settings of the Sage Web Services Configuration utility.

For information on the structure and data contained in the SalesOrder type, refer to SO_SalesOrderHeader and SO_SalesOrderDetail in File Layouts and Program Information.

Security Requirements

In Library Master Role Maintenance, click the Tasks tab and select Sales Order > Maintenance/Data Entry > Sales Order Entry > Modify.

DeleteSalesOrder

Parameters

logon

Type: Logon

The user name and password to be used for the operation

companyCode

Type: string

The company from which to delete the sales order

salesOrderNo

Type: string

The sales order to delete

Return Value

None

Remarks

This operation deletes the specified sales order from the Sage MAS 90 and 200 system.

Security Requirements

In Library Master Role Maintenance, click the Tasks tab and select Sales Order > Maintenance/Data Entry > Sales Order Entry > Remove.

GetCustomer

Parameters

logon

Type: Logon

The user name and password to be used for the operation

companyCode

Type: string

The company from which to obtain the customer

arDivisionNo

Type: string

The division number of the customer

customerNo

Type: string

The customer number to use for the template

Return Value

Type: Customer

The requested customer

Remarks

The returned value can be modified and used with the UpdateCustomer operation. For more information, see UpdateCustomer on page 65.

For information on the structure and data contained in the Customer type, refer to AR_Customer in File Layouts and Program Information.

Security Requirements

In Library Master Role Maintenance, click the Tasks tab and select Accounts Receivable > Maintenance/Data Entry > Customer Maintenance > View.

GetNextCustomerNo

Parameters

logon

Type: Logon

The user name and password to be used for the operation

companyCode

Type: string

The company from which to obtain the next customer number

Return Value

Type: string

The next customer number

Remarks

The returned value can be used to set the CustomerNo field of a Customer object before calling CreateCustomer.

Each call to GetNextCustomerNo will return a new customer number for the specified company regardless of whether the number from a previous call has been used or not.

Security Requirements

In Library Master Role Maintenance, click the Tasks tab and select Accounts Receivable > Maintenance/Data Entry > Customer Maintenance > Create.

CreateCustomer

Parameters

logon

Type: Logon

The user name and password to be used for the operation

companyCode

Type: string

The company in which to create the customer

customer

Type: Customer

The customer to create

Return Value

None

Remarks

This operation creates a customer in the Sage MAS 90 and 200 system.

The ARDivisionNo and CustomerNo fields must be set to create a customer. The GetNextCustomerNo operation can be used to obtain a customer number.

Network connectivity issues can cause errors with web services. When this occurs, it can be difficult to determine if the call completed successfully, failed, or never made it to the server.

When a connectivity error occurs with this operation, such as a timeout error, `CreateCustomer` should be called again with the same customer. It is important that the values for `ARDivisionNo` and `CustomerNo` remain the same as in the first call. If the previous call to `CreateCustomer` completed successfully, the new call will error out and `MasFault` will have `ErrorCode` set to `WS_AlreadyExists`. This error can be ignored as it indicates the previous call successfully created the customer. For more information, see [Error Handling](#) on page 28.

For information on the structure and data contained in the `Customer` type, refer to `AR_Customer` in [File Layouts](#) and [Program Information](#).

Security Requirements

In [Library Master Role Maintenance](#), click the [Tasks](#) tab and select [Accounts Receivable > Maintenance/Data Entry > Customer Maintenance > Create](#).

UpdateCustomer

Parameters

logon

Type: Logon

The user name and password to be used for the operation

companyCode

Type: string

The company from which to update the customer

customer

Type: Customer

The customer to update

Return Value

None

Remarks

This operation updates a customer in the Sage MAS 90 and 200 system.

A customer must first be obtained from the GetCustomer operation. This customer can then be modified and passed to the UpdateCustomer operation.

The ARDivisionNo and CustomerNo fields determine which Sage MAS 90 and 200 customer is updated. ARDivisionNo and CustomerNo must not be modified after the call to GetCustomer.

For information on the structure and data contained in the Customer type, refer to AR_Customer in File Layouts and Program Information.

Security Requirements

In Library Master Role Maintenance, click the Tasks tab and select Accounts Receivable > Maintenance/Data Entry > Customer Maintenance > Modify.

DeleteCustomer

Parameters

logon

Type: Logon

The user name and password to be used for the operation

companyCode

Type: string

The company from which to delete the customer

arDivisionNo

Type: string

The division number of the customer

customerNo

Type: string

The customer number to delete

Return Value

None

Remarks

This operation deletes a customer in the Sage MAS 90 and 200 system.

Security Requirements

In Library Master Role Maintenance, click the Tasks tab and select Accounts Receivable > Maintenance/Data Entry > Customer Maintenance > Remove.

GetCustomerContact

Parameters

logon

Type: Logon

The user name and password to be used for the operation

companyCode

Type: string

The company from which to obtain the customer contact

arDivisionNo

Type: string

The division number of the customer

customerNo

Type: string

The customer number of the contact

contactCode

Type: string

The contact code

Return Value

Type: CustomerContact

The requested customer contact

Remarks

The customer contact returned can be modified and used with the UpdateCustomerContact operation. For more information, see UpdateCustomerContact on page 70.

For information on the structure and data contained in the Customer type, refer to AR_CustomerContact in File Layouts and Program Information.

Security Requirements

In Library Master Role Maintenance, click the Tasks tab and select Accounts Receivable > Maintenance/Data Entry > Customer Maintenance > View.

CreateCustomerContact

Parameters

logon

Type: Logon

The user name and password to be used for the operation

companyCode

Type: string

The company in which to create the customer contact

customerContact

Type: CustomerContact

The customer contact to create

Return Value

None

Remarks

This operation creates a customer contact in the Sage MAS 90 and 200 system.

The ARDivisionNo, CustomerNo, and ContactCode fields of customerContact must be set to create a customer contact.

Network connectivity issues can cause errors with web services. When this occurs, it can be difficult to determine if the call completed successfully, failed, or never made it to the server.

When a connectivity error occurs with this operation, such as a timeout error, CreateCustomerContact should be called again with the same customer contact. It is important that the values for ARDivisionNo, CustomerNo, and ContactCode remain the same as in the first call. If the previous call to CreateCustomerContact completed successfully, the new call will error out and MasFault will have ErrorCode set to "WS_AlreadyExists". This error can be ignored as it indicates the previous call successfully created the customer contact. For more information, see Error Handling on page 28.

For information on the structure and data contained in the Customer type, refer to AR_CustomerContact in File Layouts and Program Information.

Security Requirements

In Library Master Role Maintenance, click the Tasks tab and select Accounts Receivable > Maintenance/Data Entry > Customer Maintenance > Create.

UpdateCustomerContact

Parameters

logon

Type: Logon

The user name and password to be used for the operation

companyCode

Type: string

The company from which to update the customer contact

customerContact

Type: CustomerContact

The customer contact to update

Return Value

None

Remarks

This operation updates a customer contact in the Sage MAS 90 and 200 system.

A customer contact must first be obtained from the GetCustomerContact operation. This customer contact can then be modified and passed to the UpdateCustomerContact operation.

The ARDivisionNo, CustomerNo, and ContactCode fields of customerContact determine which Sage MAS 90 and 200 customer contact is updated. ARDivisionNo, CustomerNo, and ContactCode must not be modified after the call to GetCustomerContact.

For information on the structure and data contained in the Customer type, refer to AR_CustomerContact in File Layouts and Program Information.

Security Requirements

In Library Master Role Maintenance, click the Tasks tab and select Accounts Receivable > Maintenance/Data Entry > Customer Maintenance > Modify.

DeleteCustomerContact

Parameters

logon

Type: Logon

The user name and password to be used for the operation

companyCode

Type: string

The company in which to delete the customer contact

arDivisionNo

Type: string

The division number of the customer

customerNo

Type: string

The customer number of the customer contact

contactCode

Type: string

The customer contact to delete

Return Value

None

Remarks

This operation deletes a customer contact in the Sage MAS 90 and 200 system.

Security Requirements

In Library Master Role Maintenance, click the Tasks tab and select Accounts Receivable > Maintenance/Data Entry > Customer Maintenance > Remove.

Troubleshooting

Downloading WSDL - Wrong Host Name

WSDL contains URLs that link to schema information that describes eBusiness Web Services. Internet Information Services uses the full computer name of the server hosting eBusiness Web Services as the host name in these URLs. When the full computer name does not match the common name on the SSL certificate, or when the full computer name is not accessible from the internet, WSDL will fail to download.

This issue can be diagnosed by checking the host name returned by Internet Information Services. Point a browser to `https://<host name>/<virtual directory>/<entry point>`.

For example:

```
https://www.sage.com/ebusinesswebservices/masservice.svc
```

An informational page is displayed that contains a line similar to the following:

```
svcutil.exe https://www.sage.com/eBusinessWebServices/  
MasService.svc?wsdl
```

When the host name on the informational page's URL is incorrect, the issue can be resolved by changing the full computer name of the server hosting eBusiness Web Services. If the full computer name cannot be changed, then SSL host headers can be used to resolve the issue.

Setting SSL Host Headers

Setting SSL host headers prevents the affected web site from being accessed through other host names. Internet Information Services version 6 and 7 do not allow SSL host headers to be set from the Internet Information Services Manager; therefore, special steps must be performed.

Internet Information Services 6

SSL host headers may be set by using the Metabase Explorer provided with the IIS 6.0 Resource Kit Tools which can be downloaded from the following location:

<http://www.microsoft.com/downloads/details.aspx?familyid=56FC92EE-A71A-4C73-B628-ADE629C89499&displaylang=en>

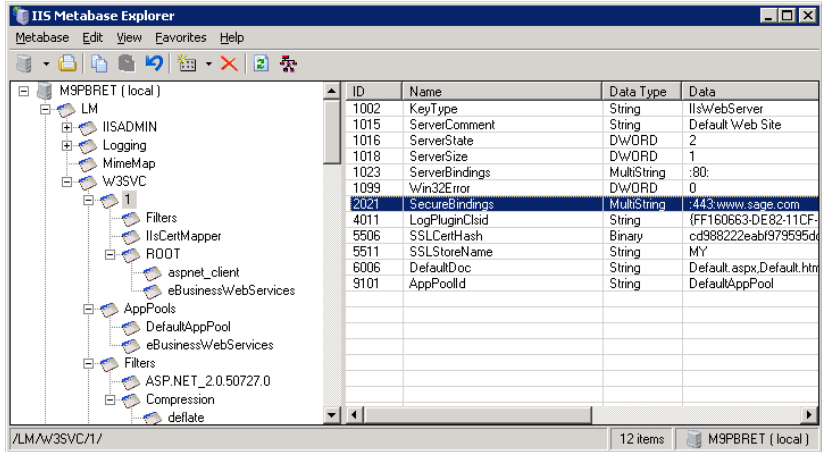
To set SSL host headers for the Web site

- 1 Select Start > All Programs > IIS Resources >Metabase Explorer > Metabase Explorer.
- 2 Locate the web site that is hosting eBusiness Web Services in the <server>/LM/W3SVC key. This can be determined by choosing each key and checking the ServerComment setting shown in the right window pane.

The default web site included with Internet Information Services is located at <server>/LM/W3SVC/1.

- 3 Set the SecureBindings setting for the web site by adding the correct host name after the SSL port number. Add a colon (:) between the port number and host name.

For example: "443:www.sage.com"



- 4 Restart Internet Information Services.

Internet Information Services 7

SSL host headers may be set by using notepad to edit applicationHost.config located in %windir%\System32\inetsrv\config. A backup copy of the applicationHost.config should be made before editing.



NOTE

Microsoft Internet Information Services (IIS) version 7 does not require a restart when this change is made.

To set SSL host headers for the web site

- 1 Set the bindingInformation attribute for the web site's https protocol by adding the proper host name after the SSL port number. Add a colon (:) between the port number and host name.

For example:

```
<site name="Default Web Site" id="1">
  <application path="/">
    <virtualDirectory path="/" physicalPath="%SystemDrive%\inetpub\wwwroot" />
  </application>
  <application path="/eBusinessWebServices" applicationPool="eBusinessWebServices"
  enabledProtocols="https">
    <virtualDirectory path="/" physicalPath="C:\Sage Software\eBusiness Web Services" />
  </application>
  <bindings>
    <binding protocol="http" bindingInformation="*:80" />
    <binding protocol="https" bindingInformation="*:443:www.sage.com" />
  </bindings>
</site>
```


Downloading WSDL - XSD not Available

The WSDL download can fail while downloading an XSD file.

To diagnose this issue

- 1 Verify that the issue is not a wrong host name. For more information, see Downloading WSDL - Wrong Host Name on page 73.
- 2 Verify that the main WSDL page can be read by pointing a browser to:
`https://<host name>/<virtual directory>/<entry point>?wsdl`

For example:

`https://www.sage.com/ebusinesswebservices/masservice.svc?wsdl`

- 3 Verify that the XSD fails to display by pointing a browser to:
`https://<host name>/<virtual directory>/<entry point>?xsd=xsd0`

For example:

`https://www.sage.com/ebusinesswebservices/masservice.svc?xsd=xsd0`

If all three items above are true, restart Internet Information Services. If the issue still occurs, change the permissions for the %windir%\Temp directory to Full Control for the eBusiness Web Services user account, and restart Internet Information Services.

Error 404 with Internet Information Services (IIS) version 6

Under certain conditions, when eBusiness Web Services is installed in Internet Information Services version 6, web services calls may fail and the entry point will display an error 404 when accessed from a browser. For example:

<https://www.sage.com/ebusinesswebservices/masservice.svc>

To correct the error 404

- 1 Ensure that the ASP.NET v2.0.50727 web service extension is set to Allowed.

Allow the ASP.NET v2.0.50727 Web Service Extension through Internet Information Services Manager.

- 2 If the ASP.NET v2.0.50727 web services extension is not listed, install it by running the following command from the command prompt:

```
%windir%\Microsoft.NET\Framework\v2.0.50727\aspnet_regiis -i
```

- 3 Restart Internet Information Services after issuing the above command.
- 4 Verify that the ASP.NET v2.0.50727 is the ASP.NET version specified for the eBusiness Web Services application.

In Internet Information Services Manager, right-click the eBusiness Web Services virtual directory, click Properties, and then click the ASP.NET tab.

General Errors

An error that occurs in eBusiness Web Services, but does not occur when accessing the same data directly from the Sage MAS 90 or 200 application, may be caused by a permissions issue.

The most common permissions issue occurs when an alternate data directory is created after eBusiness Web Services is installed. The eBusiness Web Services user account must explicitly be given full control to the alternate directory. For information on permissions, see Permissions on page 50.

Internet Information Services (IIS) must be restarted after correcting permissions issues.

Index

A

administration security, encryption 45
Advanced Settings
 UDFs 22
 MD fields 22

APIs

CreateCustomer 63
CreateCustomerContact 68
CreateSalesOrder 58
DeleteCustomer 66
DeleteCustomerContact 71
DeleteSalesOrder 60
GetContractInformation 51
GetCustomer 61
GetCustomerContact 67
GetDiagnosticInformation 52
GetNextCustomerNo 62
GetNextSalesOrderNo 54
GetSalesOrder 53
GetSalesOrderTemplate 55
PreviewSalesOrder 56
UpdateCustomer 65
UpdateCustomerContact 70
UpdateSalesOrder 59

C

cache, object cache 49
Company Maintenance, setup 47
configuration, setup 45
credit cards
 decryption 21
 encryption 21

E

eBusiness Web Services
 advanced settings 25
 configuration utility 24
 date conversion 20
 error handling 29
 getting started 5
 installing 7
 manage entry points 27
 time conversion 20
 uninstalling 15
entry point, default 18
error handling, eBusiness Web Services 29

error messages
 general 79
 IIS 78

I

IIS, error messages 78
install guide
 graphic conventions 2
 how to use 2
 text conventions 3
installing
 eBusiness Web Services 7
 user account 13

J

Java example 41

L

log, error logging 48

P

permissions, user account 50
PHP5 example 43
protocols, SOAP 19

S

setup
 company maintenance 47
 system configuration 46
 user maintenance 48
SSL
 encryption 45
 security 45
standard language, WSDL 18
System Configuration, setup 46

T

troubleshooting 73

U

uninstalling, eBusiness Web Services 15
User Maintenance, setup 48

V

Visual Studios 2003 examples

C# 38

VB.Net 39

Visual Studios 2008 examples

C# 35

VB.Net 36

W

WSDL

types 18

wrong host name 73

XSD 77

X

XSD, WSDL 77