

Sage ERP

What's New in Sage 100 ERP

Lori Maloof, Product Manager





#1 worldwide vendor of ERP software for SMBs*

6.3m Customers

GOAL

To be recognized as
the most valuable supporter of
small and medium-sized companies
by creating greater freedom
for them to succeed

Source: *IDC #220937, Worldwide ERP Vendor Analysis,
Based on ERP revenue small business; <1000 employees



Sage 100 ERP Roadmap

2014 Release

November 2013

- Support Mobile initiatives
- Sage Inventory Advisor support
- Improved CRM Integrations
- Intelligence installed from menu
- UX improvements
- Payroll and tax forms to Aatrix
- Online pay history
- Top enhancements – soft commit

Product Update

January 2013

- Payroll & Tax updates

2012

2013

2014

2013 Release

December 2012

- Sage Exchange
- Sage CRM integration improvements
- Sage CRM web orders and quotes
- Top Customer Enhancements
- Sage Advisor Update
- SData Web Services
- Support for Windows 8 and SQL Server 2012

Product Update

June 2013

- Sage Advisor – Add User & Title tracking
- Sort by check in bank rec

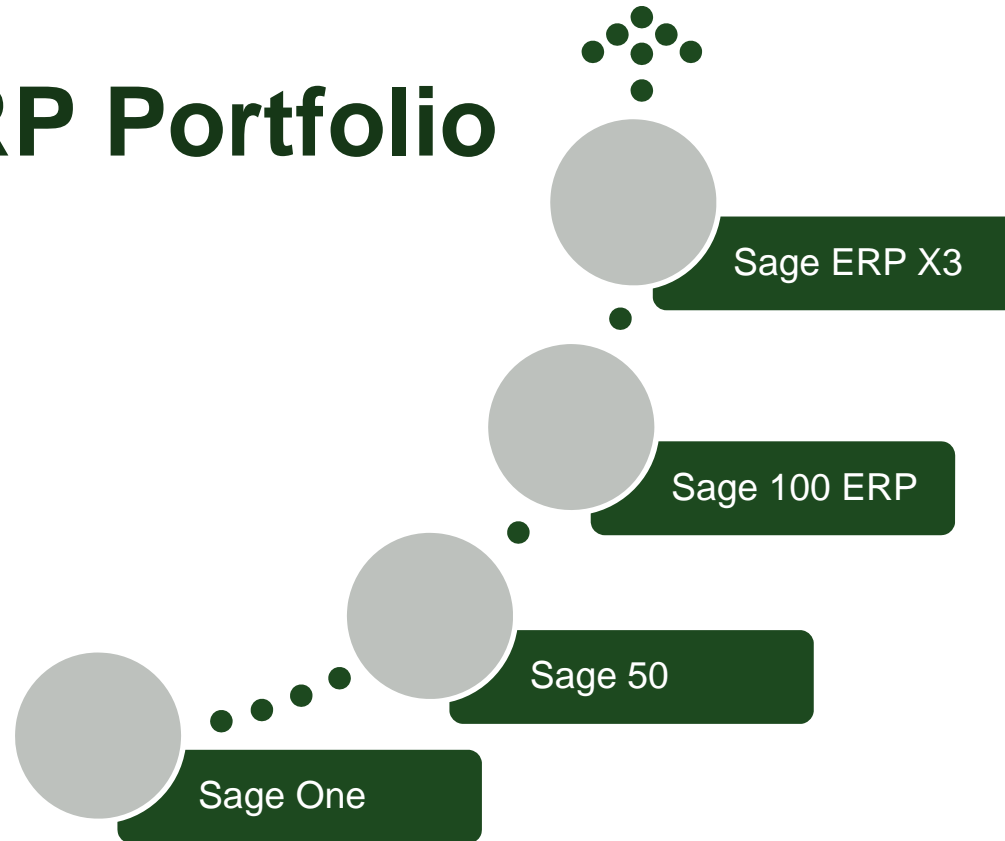
Product Update

Q2 2014

- Minor enhancements



Sage ERP Portfolio



Sage Payroll Sage Intelligence Sage CRM Sage HRMS

Sage Budgeting and Planning Sage Fixed Assets

CONNECTED SERVICES

Sage Payments Sage Sales Tax Sage Shipping Sage Alerts



The Road Ahead



Mobility & Innovations



2013 & Beyond



Connected Services



Integrations



Functionality



User Experience



Voice of the Customer



Top ideas from www.Sage100ERP.com/feedback

291

Increase the length of the Accounts Payable invoice number field.

planned

Vote for

Some vendors use invoice numbers longer than 10 characters; therefore, they must decide which part of the number to enter. Not having the full invoice number causes ...

Comments (26) | by: Roberta V. | Status changed about a year ago | 1 - Financial Management

83

SMTP Authentication options for Paperless Electronic Delivery

planned

Vote for

As more email providers are moving to some type of SMTP authentication requirements for their email it would be nice to be able to choose an outbound authentication ...

Comments (23) | by: Brian B. | Status changed 7 months ago | 8 - General Enhancements

253

ability to inactivate customers and vendors

planned

Vote for

The ability to inactivate customers and vendors would be great. Then they will be able have there information and history stored, but will not show up on reports.

Comments (6) | by: Amy J. | Status changed about a year ago | 1 - Financial Management

98

Item Quantity Available on Main Panel of Item Inquiry in version 4.4

planned

Vote for

In version 4.40, for an Item Inquiry, we want to see the Quantity panel information (warehouse detail) on the Main panel. (Similar to the pre 4.4 screen) The two most ...

Comments (4) | by: Roberta V. | Status changed 8 months ago | 3 - Sales & Distribution

164

PLEASE UPDATE THE US ZIP CODE LIST IN MAS!!

Vote for

The zip code list in MAS is really, really outdated. Users have to waste time ente codes, when in reality updates to the US Zip code list could just as easily be ...

Comments (13) | by: Pamela F. | Status changed about a year ago | 3 - Sales & Distribution

85

Ability to see if Checks listed in VM have been cleared through Bank ...

planned

Vote for

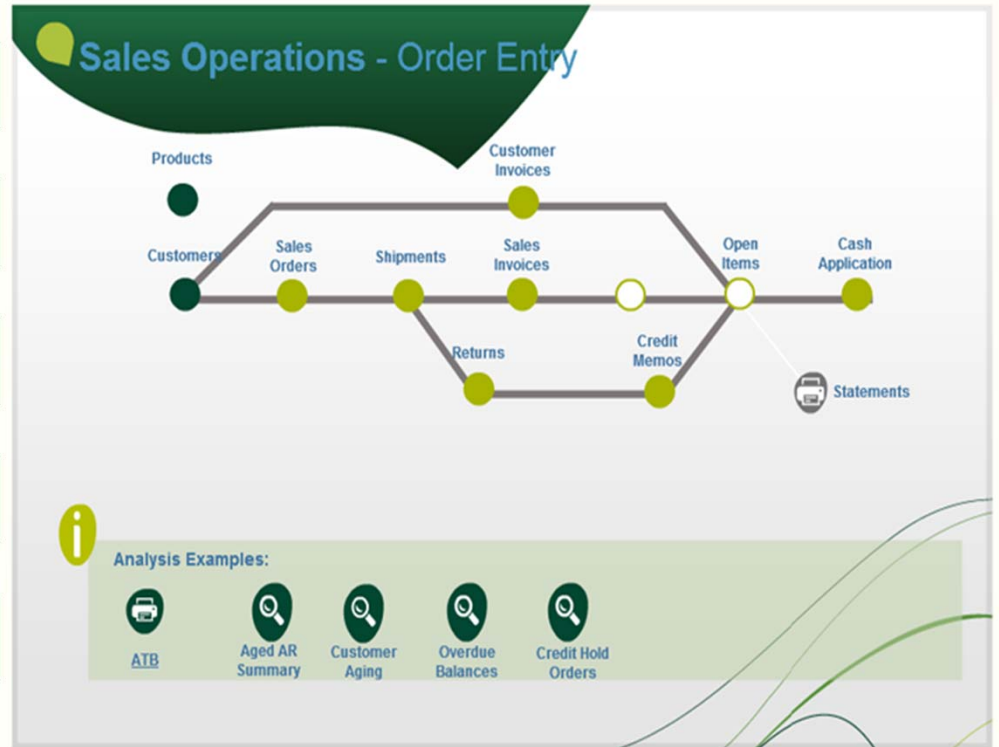
Would like to be able to see if a check listed in the Vendor Maintenance screen as being issued to the vendor has also been marked as cleared or reconciled in Bank Rec ...

Comments (3) | by: Brian L. | Status changed 8 months ago | 1 - Financial Management

sage

Improved User Experience

- Visual Process Flows
- Crystal Reports
- 64-Bit ODBC Driver
- SData
- Sage Advisor Update



Sales Order

Entry and Invoice

Enter Order

Ship

Invoice

Post



Print

Reports

Inquiries

RMA
Return Goods



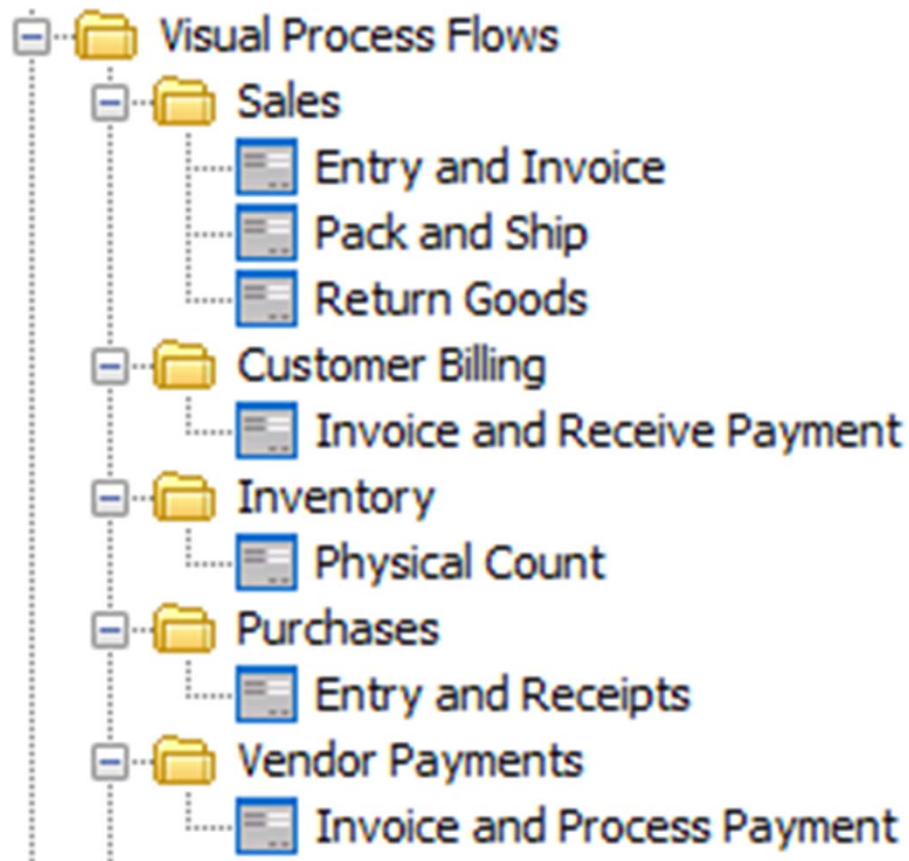
- Sales Order
- Picking Sheet
- Shipping Label
- Invoice
- COD Label

- 🖨️ Open Sales Order
- 🖨️ Open Orders by Item
- 🖨️ Back Order
- 🖨️ Customer Sales History
- 🖨️ Daily Drop Ship

- 🔍 Sales Order History
- 🔍 Customer
- 🔍 Item
- 🔍 Invoice History
- 🔍 Shipping History

Sage Visual Process Flows

- Version 2013 will include out-of-the-box process flows for



Crystal Reports

- Updated to latest version of SAP® Crystal Reports 2011 for Sage
- Updated the report engine run-time components utilizing a modern .NET architecture
 - All standard reports and forms saved with a 2011 backwards compatible format
- Crystal Conversion Utility updated with the .NET architecture and a new user interface
- Allows Sage 100 ERP to stay current with SAP® Crystal Reports new features and product updates



64-Bit ODBC Driver

- New 64-bit ProvideX ODBC Driver Available
- Allows Integrations with 64-bit Applications
 - Microsoft SQL Server
 - Microsoft Office
- Separate Installation found off the Productivity Tools menu on the Sage 100 ERP Autorun Menu



SData

- SData - is a communication protocol powering the integration of Sage products
- Applications supporting SData open their information for consumption not only among themselves but for all participants in the World Wide Web
- SData is a REST-style web services protocol
 - See <http://sdata.sage.com> for the official Sage SData site.



Sage Advisor Update

- Automatic way for Sage to deliver updates
- Common initiative used by all Sage products
- Customers should work with their partners on implementation

The screenshot displays the 'Manage Updates' interface. On the left is a navigation menu with options: Manage Updates, Configuration, Notification, Messages, History, Manage M & S, and Manage Services. The main content area is titled 'Manage Updates' and features a table of 'Available Updates'. The table has columns for Product Line, Version, Type, M&S St., Description, Link To Detail, and Link To M&S. Below the table are buttons for 'Download & Install' and 'Download Only'. On the right side, there is a 'Key Information' section with a progress indicator, a legend for 'Current', 'Nearby Expiration', and 'Expired', and a note 'M&S expires on: 09/01/2011'. At the bottom right is the Sage logo.

Product Line	Version	Type	M&S St.	Description	Link To Detail	Link To M&S
Uncomerby Signed Test Ap	14.02.20.002	SP		Description for TestApplication140220002.msi		
SSDP Test Application	nevone		cat	fgpdlg		
SSDP Test Application	nevone		cat	dfgdlg		
SSDP Test Application	nevone		cat	Test7		
SSDP Test Application	nevone		cat	u ykulyf		
SSDP Test Application	nevone		cat	asdfsd		
SData Bridge Demo Data S...	4			SData Bridge Demo POC		
Southwind 9M Data Service	0a			Initial version		
LXK SSDP Test Product	1.2			This is the description		
Test Application	14.02.29.003		cat	Description for TestApplication140229003.msi		
Unsigned Test Application	14.02.20.002		cat	Description for TestApplication140220002.msi		
Unsigned Test Application	14.02.20.002		cat	TestApplication140220003.msi		

Functionality

- Expanded AP Invoice Number
- View Checks Cleared in Vendor Maintenance
- Post ACH Payments in Detail
- Inactivate Vendors
- Inactivate Customers
- Paperless Office
- Item Maintenance



Expanded A/P Invoice Number

- Can now enter up to 20 characters for invoice number
- Schema, Screens, Reports, Forms, Journals, Lookups all modified for new expanded invoice number
- Impacted A/P, P/O, G/L, J/C, BIE, BIR, ACH
- Reports display full invoice number

A/P Invoice Data Entry (ABC) 4/2/2012

Vendor No. 01-AIRWAY

Name Airway Property

Invoice No. 04022012-12345678901

1. Header | 2. Lines

Invoice Date 4/2/2012

Invoice Amount 500.00

Subject to Discount 500.00

Prepaid Invoice

Terms Code 03 NET END OF MONTH

Invoice Due Date 4/30/2012

Discount Due Date

Discount Amount .00

Hold Payment Separate Check

Comment

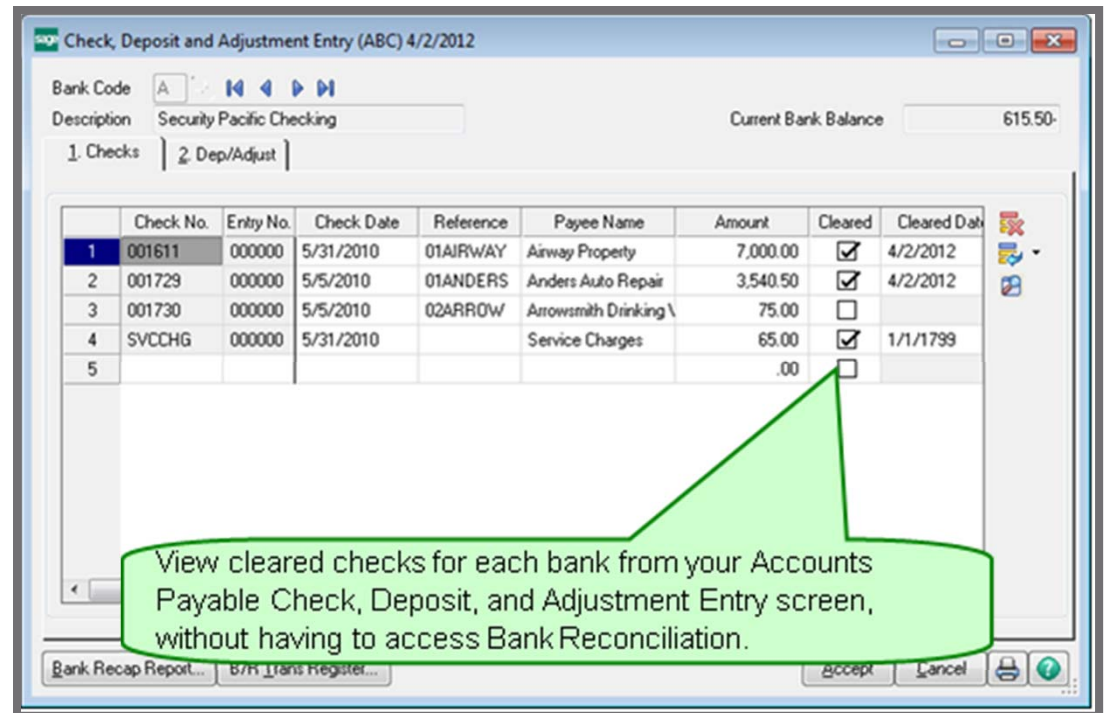
1099 Payment

Form None Box

Accept Cancel Delete

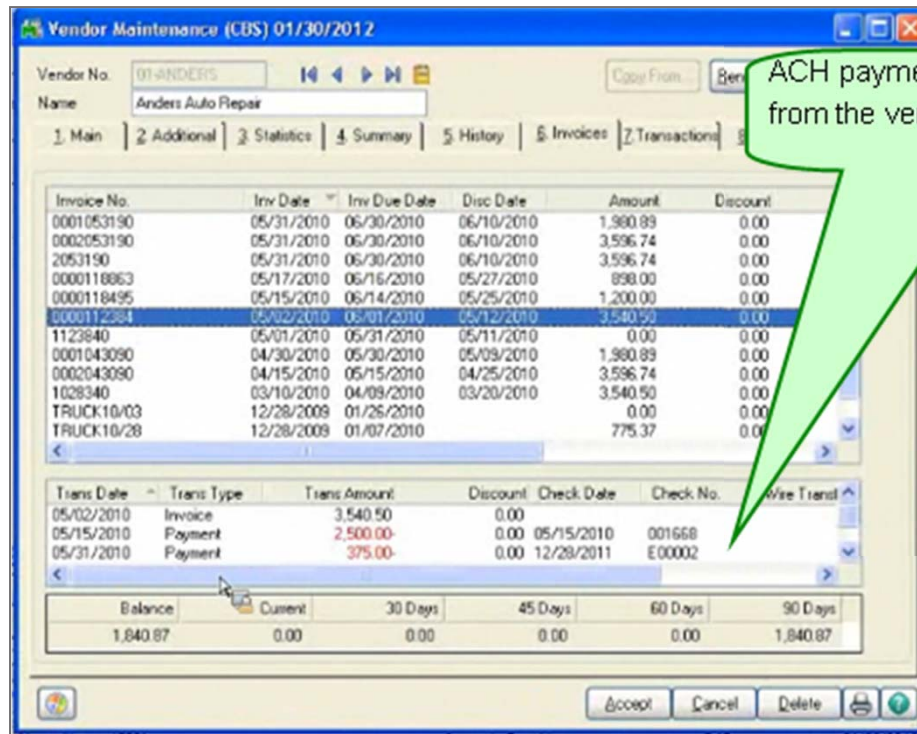
Ability to View Cleared Checks in Vendor Maintenance

- New A/P Setup Option
- Changes to B/R entries
 - Accept logic
- Changes to Vendor Maintenance



Post ACH Electronic Payments to Bank Rec in Detail

- New A/P Setup Option
- Previously posted lump sum
- Can now post dollar value checks



Vendor No. 01-ANDERS
Name Anders Auto Repair

1. Main | 2. Additional | 3. Statistics | 4. Summary | 5. History | 6. Invoices | 7. Transactions

Invoice No.	Inv Date	Inv Due Date	Disc Date	Amount	Discount
0001053190	05/31/2010	06/30/2010	06/10/2010	1,980.89	0.00
0002053190	05/31/2010	06/30/2010	06/10/2010	3,596.74	0.00
2053190	05/31/2010	06/30/2010	06/10/2010	3,596.74	0.00
0000118863	05/17/2010	05/16/2010	05/27/2010	898.00	0.00
0000118495	05/15/2010	05/14/2010	05/25/2010	1,200.00	0.00
0000112384	05/02/2010	05/01/2010	05/12/2010	3,540.50	0.00
1123840	05/01/2010	05/31/2010	05/11/2010	0.00	0.00
0001043090	04/30/2010	05/30/2010	05/09/2010	1,980.89	0.00
0002043090	04/15/2010	05/15/2010	04/25/2010	3,596.74	0.00
1028340	03/10/2010	04/09/2010	03/20/2010	3,540.50	0.00
TRUCK10/03	12/28/2009	01/25/2010		0.00	0.00
TRUCK10/28	12/28/2009	01/07/2010		775.37	0.00

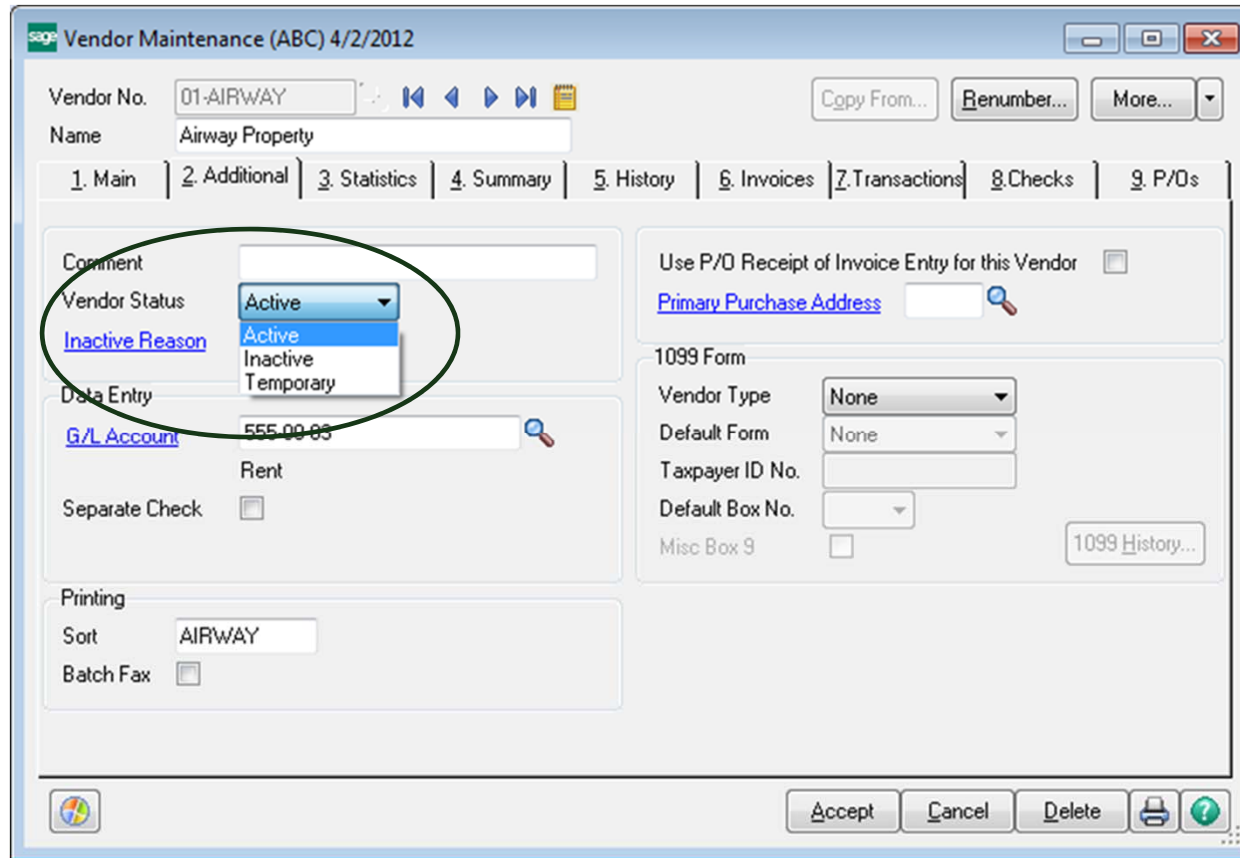
Trans Date	Trans Type	Trans Amount	Discount	Check Date	Check No.	Wire Trans
05/02/2010	Invoice	3,540.50	0.00			
05/15/2010	Payment	2,500.00	0.00	05/15/2010	001658	
05/31/2010	Payment	375.00	0.00	12/28/2011	E00002	

Balance	Current	30 Days	45 Days	60 Days	90 Days
1,840.87	0.00	0.00	0.00	0.00	1,840.87

Accept Cancel Delete



Inactive Vendors



Inactivate Customers

Easily identify inactive customers with the reason code

Customer No. 01-MAVRK
 Name Maverick Papers
 Comment
 Open Item Customer Internet Enabled
 Customer Status Inactive
 Inactive Reason DISP1 Dispute over invoices
 Data Entry
 Price Level
 Dflt Pymt Type CHECK
 Discount Rate .000 %
 Fin Charge Rate 1.500 %
 Item Code

	Code	Description
1	OUTOB	Out of Business
2	MERGE	Merged with another company
3	INACT	No activity in a year
4	CHP11	Chapter 11
5	DISP	Dispute over payments
6	DISP1	Dispute over invoices
7		

Accept Cancel

Paperless Office SMTP Encryption

- No need to maintain dedicated Email server!!!
- Google mail, Yahoo, Hotmail, etc.
- Chillkat 9.3.0 now installed
- Company Maintenance E-mail tab
 - Select SSL or TSL/STARTTLS



Item Maintenance Main Tab

- A picture is worth a thousand words!

Item Code: 1001-HON-H252
 Description: HON 2 DRAWER LETTER FILE W/O LK

1. Main | 2. Additional | 3. Quantity | 4. History | 5. Transactions | 6. Orders | 7. Cost Detail

Product Line: WF&A WORKSTATION FURN & ACCESS
 Product Type: Finished Good
 Valuation: FIFO
 Procurement: Buy

Unit Measure: Standard EACH
 Purchases EACH
 Sales EACH

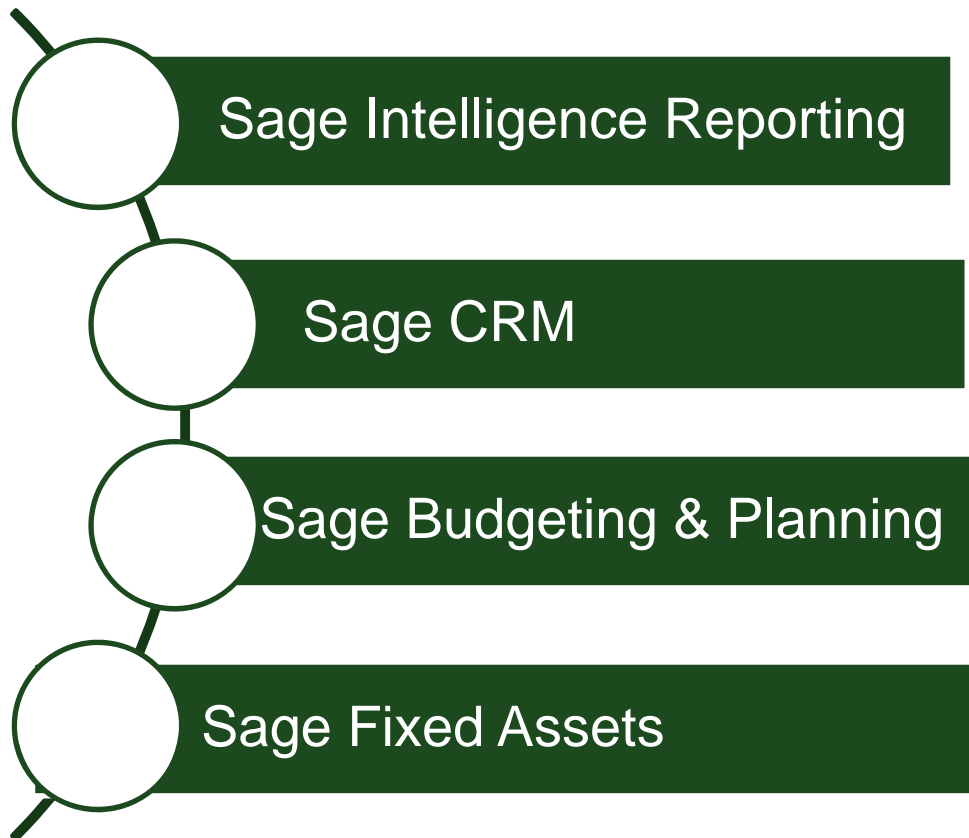
Price Code: STD STANDARD QUANTITY PRIC
 Default Whse: 000 CENTRAL WAREHOUSE
 Primary Vendor: 01-CONT Container Corporation Of Usa
 Warranty Code: 30 DAY 30 days from shipment

Sales		Purchases		Last Costs	
Retail Price	84.000	Standard Cost	32.750	Weighted Average	34.250
Standard Price	84.000	Average Cost	34.250	Allocated	34.250
Last Sold	5/1/2010	Last Receipt	5/1/2010	Total	34.250

Quantities									
Whse	Description	On Hand	On PO	On SO	On BK Ord	Committed	Available	In Shipping	On H
000	CENTRAL ...	2,675.00	1.00	.00	.00	.00	2,675.00	.00	
001	EAST WA...	992.00	.00	3.00	.00	3.00	989.00	.00	
002	WEST WA...	1,519.00	.00	12.00	10.00	22.00	1,497.00	.00	
098	SCRAP W...	1.00	.00	.00	.00	.00	1.00	.00	

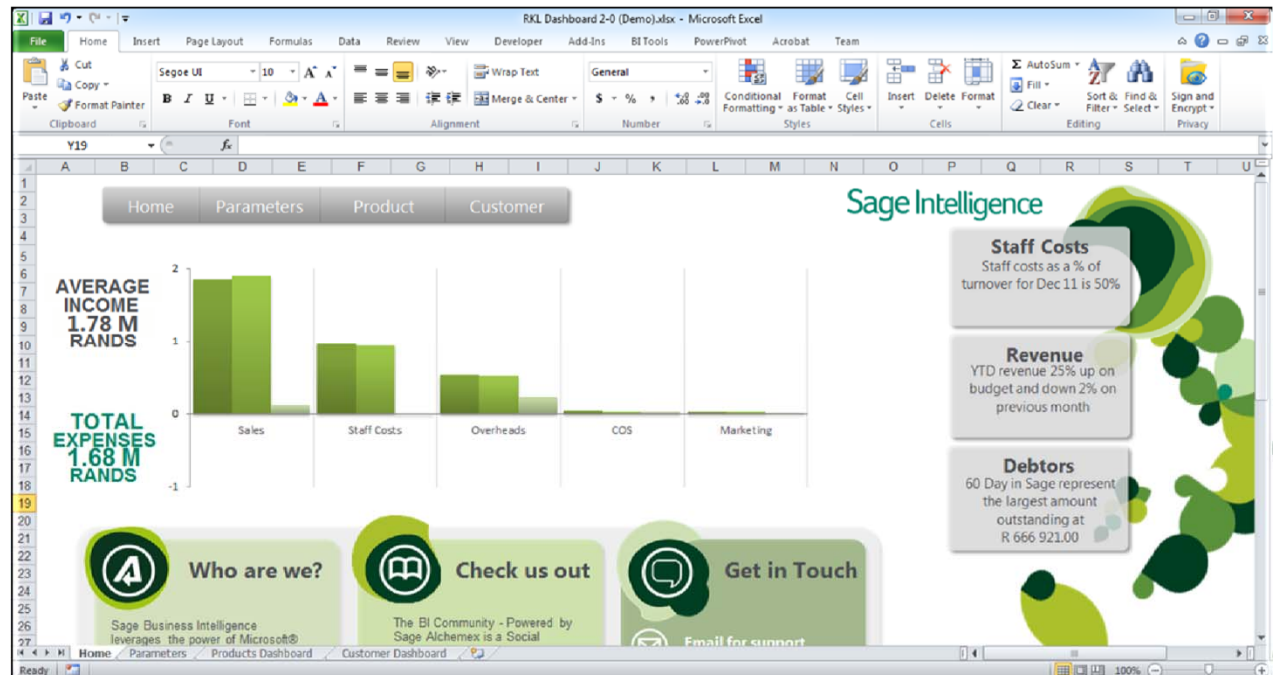


Integrations



Sage Intelligence Reporting

- New Designer Add-In
 - Easier to use
 - Better performance – in-memory processing
- New Report Templates
- Report Distribution
- Reporting Trees



Increased Performance



With **New** Report Designer Add-In

2GB Database
2 Fiscal Years
2700 Accounts
35061 Budget Balances
6.5 Minutes to Run



2GB Database
11 Fiscal Years
5600 Accounts
117000 Budget Balances
42 Seconds to Run

2.5GB Database
2 Fiscal Years
10281 Accounts
25 Minutes



2.5GB Database
10 Fiscal Years
46580 Accounts
1 Minute to Run



Sage Intelligence Resources

- Join the BI Community
 - <http://community.alchemex.com/>
- Register for FREE webcasts
 - www.alchemex.com/Webinars.aspx
- Sign up for Sage Intelligence Excel Tips and Tricks
 - www.alchemex.com/SubscribeNewsletters.aspx
- Sign up for Training at SageU
 - <http://www.sageu.com/sage100erp/>



Sage CRM v7.1 SP2 Functionality

- Multi-browser support
- Mail Merge
- Document Filing
- Sage CRM for tablet
- Multiple ERP companies per single CRM database
- Quick Order Entry Form

The screenshot shows the Sage CRM QuickQuote form. The browser window title is "CRM - Windows Internet Explorer" and the address bar shows "http://msv-4gm-2008r2/crm/eware.dll?go". The SageCRM logo is visible in the top left corner.

Order Information

Order Number: 0000149 | Order Date: 5/23/2010 | Order Type: [Dropdown] | Salesperson: Sage CRM User | Sage CRM Opportunity: [Dropdown]

Customer Number: 02-AMERCON | Name: American Concrete Service | Customer PO Number: [Text]

Confirm To: Mike Thompson | E-mail: [Text] | Fax Number: [Text]

Ship Date: 5/23/2010 | Ship Via: MAIL | FOB: [Text] | Comment: [Text]

Bill To Address: Anaheim, CA

Ship To Address: Anaheim, CA

Item Detail

Item Code: [Text] | Item Description: [Text] | Unit of Measure: EACH | Warehouse: 002

Ordered: 0.00 | Back Ordered: 0.00 | Unit Price: 0.000 | Discount Percent: [Text] | Extension: 0.00

Promise Date: 5/23/2010 | Comment: [Text] | Drop Ship:

Item Code	Description	Ordered	Back Ordered	Unit Price	Extensi
1 1001-HON-H252	HON 2 DRAWER LETTER FLE	35.00	10.00	75.600	756.
2 1001-HON-H252LK	HON 2 DRAWER LETTER FLE	2.00	.00	87.000	
3 1001-HON-H254	HON 4 DRAWER LETTER FLE	5.00	2.00	127.070	254.
4 1001-HON-H254LK	HON 4 DRAWER LETTER FLE	6.00	2.00	130.950	261.
5 2490-B-50	DESK FILE 8" CAP 50	25.00	20.00	31.460	629.
6 2481-S-50	DESK FILE 5 1/4" CAP 50	10.00	.00	18.550	

Order Total: 3,054.28

UDFs

Additional Sage CRM Enhancements

- Tasks launched from Sage CRM do not use a Sage 100 ERP license
 - Allows for distinct separation between front and back office
- Installations Updated to Maintain the Integrity of Customer and Partner Customizations
 - Minimizes the number of changes that need to be re-done after each upgrade
 - Still may require some re-work if customizations are made to the same forms that Sage modifies
- Sales Order Memos will now auto display



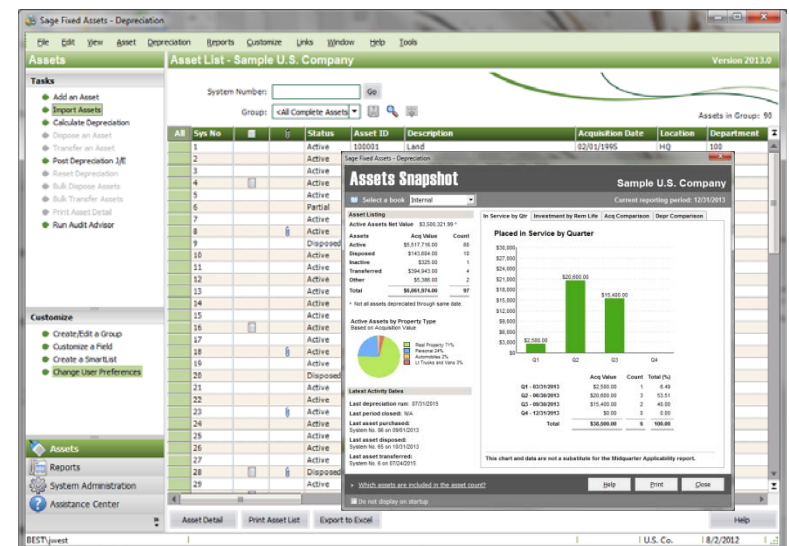
Sage Budgeting and Planning

- Shorter planning cycles through collaborative budgeting and planning process
- Security and access control
- Web accessibility
- Seamless integration with ERP data
- Best-of-breed functionality
- Automated Consolidation
- Ability to handle “Rolling Forecasts” and copy forward
- Highly Configurable
- Great Price/Value ratio

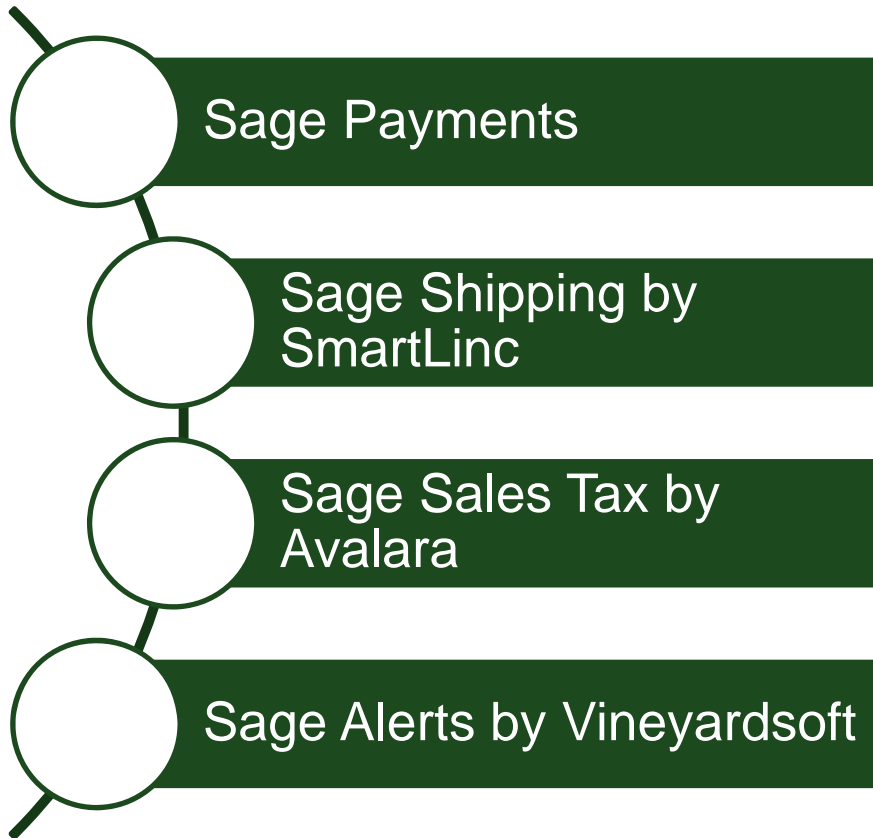


Sage Fixed Assets 2013

- Combined Product Families
- Government/Nonprofit/Canada/ US editions in one product
- Editable Notes
- Attach PDF's to Assets
- Sage Advisor Update Console Integration
- For a quick overview and a virtual tour visit www.sagefixedassets2013.com



Connected Services



Credit Card Processing Enhancements

- All Credit cards are now entered and stored in the Sage Exchange Vault
- Take credit cards for Accounts Receivable Invoices
 - Services companies without inventory can take payments within normal invoicing workflow
 - When batch of invoices is updated, payments are captured
- Take credit cards for Recurring Invoices
 - Generate recurring invoices as you normally do and have credit card associated with them
- More intuitive workflow to speed entry when processing credit cards in A/R Cash Receipts.
- Print the amount of the credit card payment on the appropriate Sales Order Invoice to deliver confirmation to your customers.
- You can decide how much to pre-authorize on each transaction rather than always using the sales order amount.



Sage Shipping by SmartLinc

- Multi-Carrier solution
 - UPS, FedEx, USPS – US and Canada
- Produces carrier compliant shipping label
- Updates all ship data and costs back to ERP
 - Tracking number
 - Cost of Shipment
- Automatic email notification to customer
- Maintains shipping history
- <http://www.smartlinc.net>



Sage Sales Tax by Avalara

- Makes paying sales tax simple for any business.
- Automatically performs address validation, sales tax jurisdiction research, and rate calculation
 - Seamlessly integrated with Sage 100 ERP
 - Covers all sales tax jurisdictions in US and Canada
- Protect yourself from the risk of an audit



Sage Alerts by Vineyardsoft

- Business Activity Monitoring
- Notify staff about critical business issues – when they occur
- Identify trends or problems across your business
- Trigger “workflow” to update your applications, schedules intelligent tasks, and moves information between an organization’s disparate software systems

<http://www.sageknowledgesync.com>



Learn more about Sage 100 ERP 2013

- Visit the Sage 100 ERP 2013 launch microsite:

www.Sage100ERP.com/2013release

- Read the [What's new Brochure](#)
- [Top Ten Reasons to Upgrade](#)
- Take the Free "What's New" customer course on SageU: <http://www.sageu.com/sage100erp/>



Sage 100 ERP

Comprehensive ERP.
Cost-Effective.
Securely Accessible!

What's New in Sage 100 ERP 2013?

The newest release of Sage 100 ERP (formerly Sage ERP MAS 90 and 200) continues to provide the most comprehensive business management suite by Sage for mid-sized and smaller distributors and manufacturers looking to streamline operations in a cost-effective, accessible and secure way. Sage 100 ERP 2013 includes many enhancements you've requested as well as new cloud services and add-on solutions. You'll see substantial benefits when you start using all the new enhancements such as Visual Process Flows, Credit Card Processing using Sage Exchange, streamlined processing, and more. The main feature and functionality enhancements in Sage 100 ERP 2013 are in Accounts Payable, Accounts Receivable, Bank Reconciliation, Inventory Management, Paperless Office, Sage CRM, Intelligence Reporting, and Credit Card Processing through Sage Exchange.

[See Sage 100 ERP 2013 for yourself in an upcoming What's New Webcast.](#)

Comprehensive and Cost-Effective

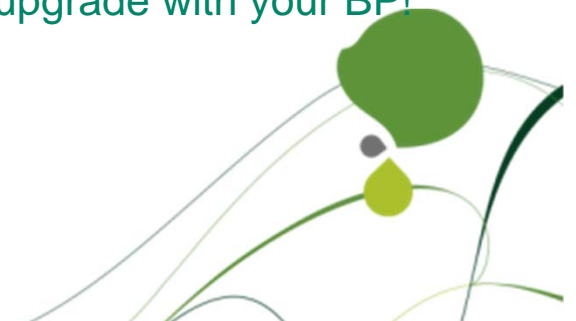
Register for the What's New in Sage 100 ERP 2013 webcast and discover how new enhancements help you streamline your operations in a cost-effective and securely accessible way.

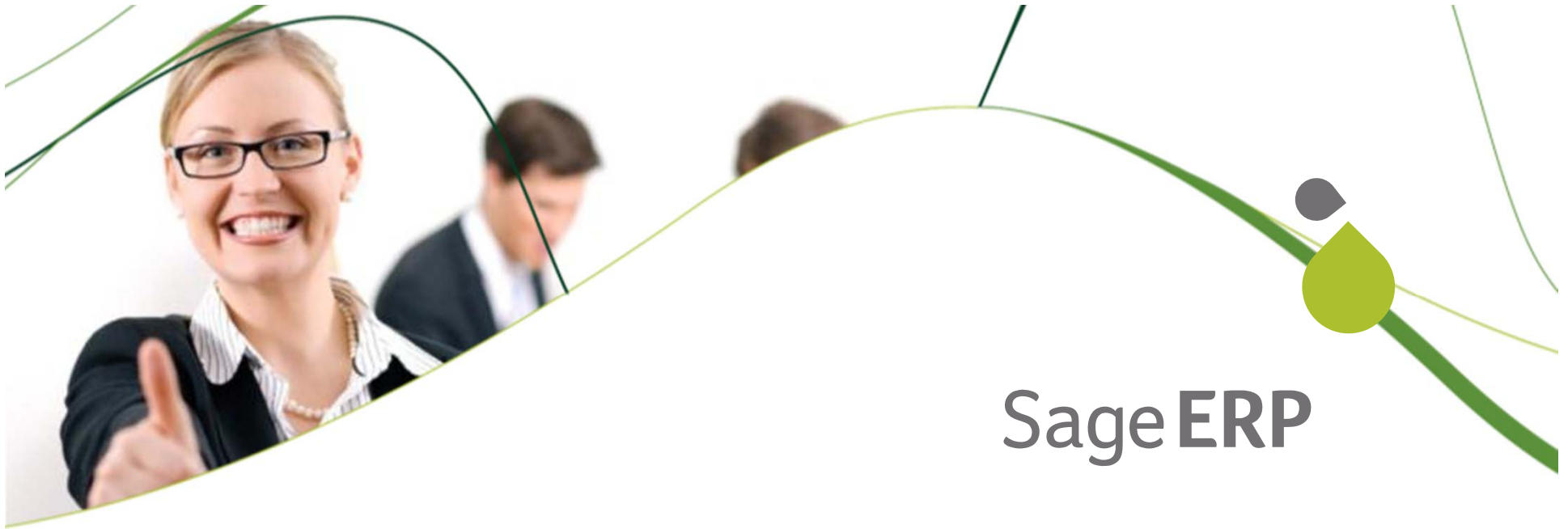
[Register Now](#)

Learn more

- [What's new in Sage 100 ERP Brochure](#)
- [Top Reason to Upgrade](#)
- [Sage 100 ERP Intelligence Reporting spec sheet](#)
- [Sage 100 ERP Payment Solutions spec sheet](#)
- [Sage 100 ERP Shipping spec sheet](#)
- [Sage 100 ERP Sage CRM spec sheet](#)
- [Sage 100 ERP Microsoft SQL Server spec sheet](#)

Look for your detailed email communication and schedule your upgrade with your BPI





Sage ERP

What Are The Future Plans?

Beyond the Sage 100 ERP 2013 Release.....

sage

acutedata

Sage 100 ERP Product Updates and 2014 Release

- Product Update 1
 - Year end updates
 - Sage Inventory Advisor
 - Incorporation of beta feedback
- Product Update 2
 - Support new product innovations
 - Mobile Sales
 - Mobile Service
 - Account Billing and Payments
- 2014 Release
 - Enhancements based on www.sage100erp.com/feedback
 - Enhancements based on Sage Advisor Data
 - Additional Visual Process Flows
 - Tighter integrations
 - Payroll Online Paystubs



2013 release
scheduled for Q4
2013



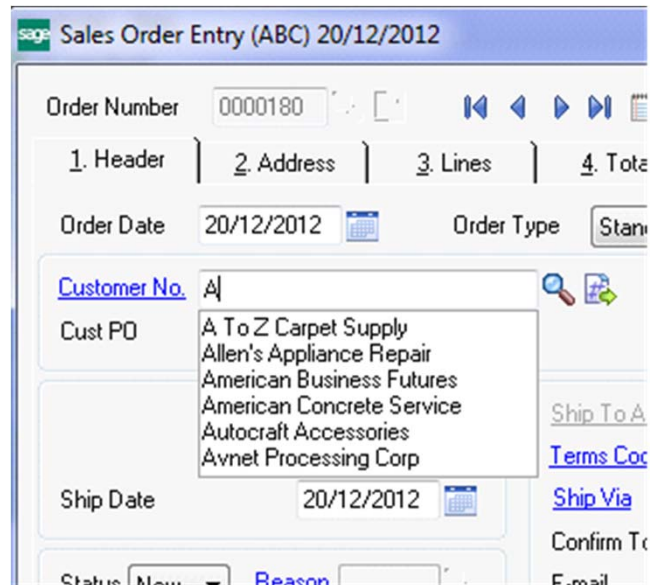
Online Pay History

- Included with new Payroll
- Employee self-service web portal to access
 - Pay Stubs
 - Company announcements

My Pay Stubs							
118	Janet A Krause	XXXXX3333	06/30/11	1,593.06			
Employee No.	Employee Name	Social Security Number	Check Date	Net Pay Amount			
Earnings	Hrs/Units	Rate	Current Amount	YTD Amount	Deductions	Current Amount	YTD Amount
Social Security Tax	0.00000	0.00000	86.23	86.23	Social Security Tax	86.23	86.23
US Federal Income Tax	0.00000	0.00000	344.05	344.05	US Federal Income Tax	344.05	344.05
Medicare Tax	0.00000	0.00000	29.77	29.77	Medicare Tax	29.77	29.77
Salaried	80.00000	25.41000	2,033.11	2,053.11			
Current Totals				Year to Date Totals			
160		460.05	1,593.06	2,053.11	460.05	1,593.06	
Hours Worked	Earnings	Deductions	Net Pay	Earnings	Deductions	Net Pay	

User Interface Improvements

- Auto Complete



User Interface Improvements

Customer Listing (ABC) 12/19/2012

Report Setting: STANDARD Save

Description: Customer Listing

Setting Options

Type: Public Print Report Settings: [] Number of Copies: 1

Default Report: [x] Three Hole Punch: [] Collated: [x]

Sort Report By: Customer Number

Options

Customers to Print: Active Only Report Type to Print: Customer Information

Additional Information

Print Customer Memos: [] Print Tax Exemption Numbers: []

Print Customer Contacts: [] Print Internet Information: []

Print Customer Credit Cards: [] Print Split Commission Information: []

Print Ship To Addresses: []

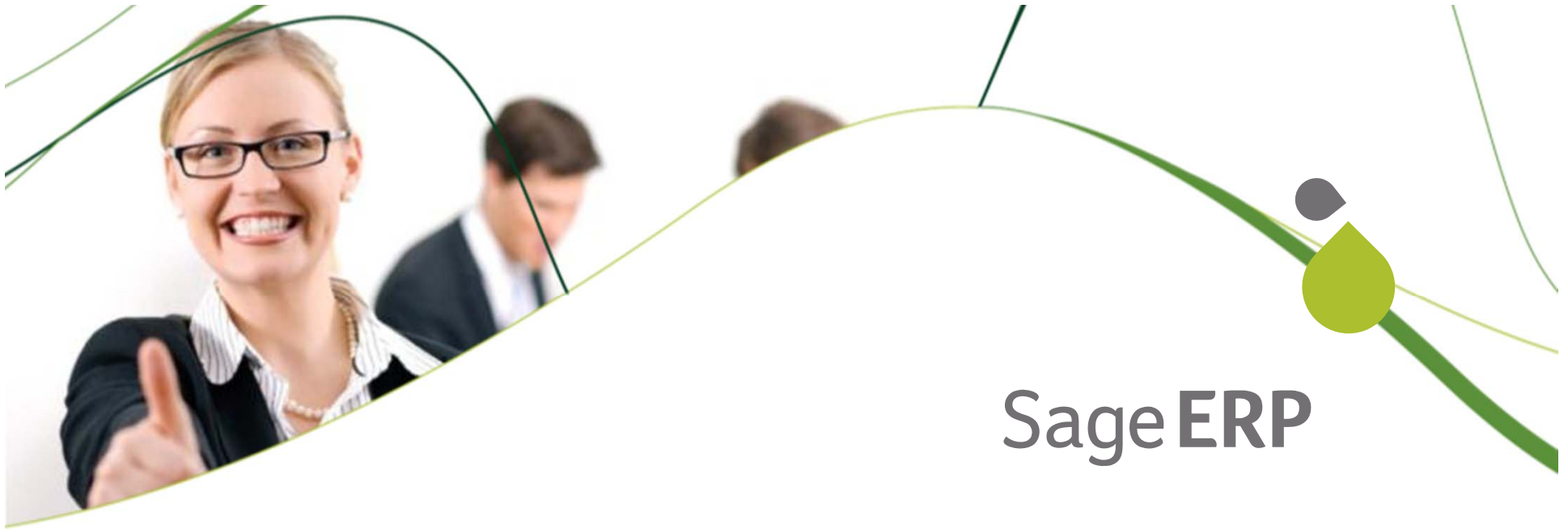
Selections

Select Field	Operand	Value
Customer Number	All	
Customer Name	All	
Salesperson	All	
Customer Type	All	

\\CAIFP01\CAIMKTGP6 Keep Window Open After Print [] Preview [] Print Preview Setup

Add to Custom Reports and GL Financial Reports





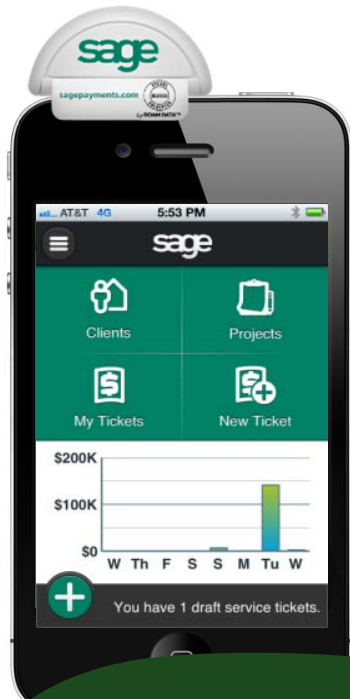
Sage ERP

Mobility & Innovation



Mobile Connected Services

Sage Mobile Service



Ideal for Field Service employees to complete Sales transactions including Payment at the point of service

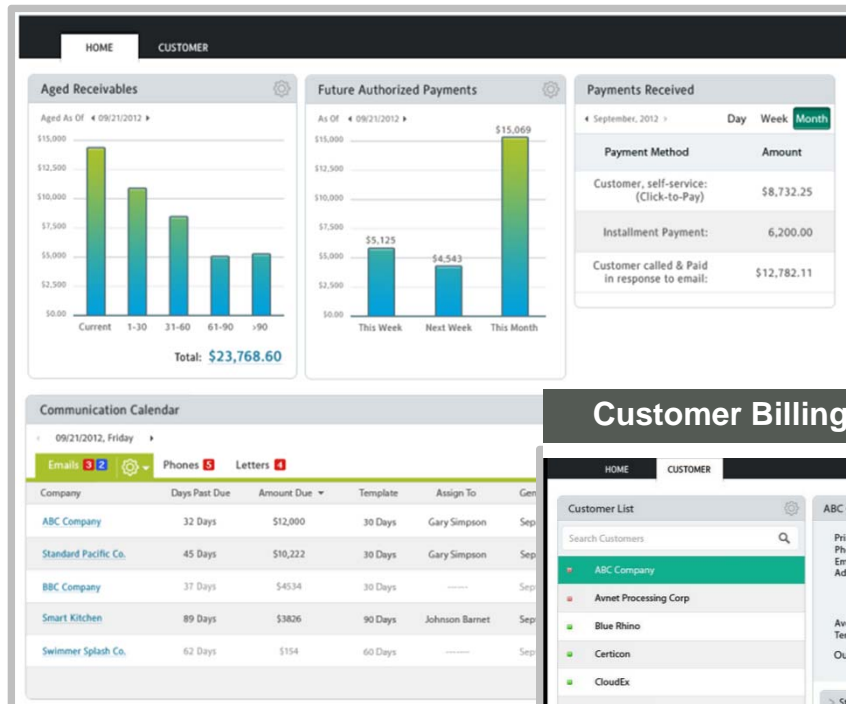
Sage Mobile Sales



Ideal for Product Salespeople to create Proposals, generate Quotes and complete sales transactions at customer sites. And, it provides Sales Manager oversight of discounting and sales rep performance.

Account Billing & Payment: Cloud Connected Service

Dashboard View of Progress and Communications



Customer Full or Installment Payments

The form displays a list of customers and provides detailed information for a selected customer, ABC Company. The details include:

- Customer List:** A list of customers with a search bar.
- ABC Company Details:**
 - Primary Contact: G Raymond (1-604-123-4567, graymond@abccompany.com)
 - Address: 1234 Main Street, Vancouver, BC, A1A 1A1
 - Average Days to Pay: 45
 - Terms: Net 30 Days
 - Outstanding Amount: **\$27,570.23**
- Statement:** 4 Past Due Invoices
- Payments:** 3 Payments Scheduled
- Communications:**

Type	Description	Date
30 Days Notification		-----
60 Days Notification		Wed Sep 12 2012 5:00pm
Call Gary Raymond		Tue Aug 21 2012 10:00am
Call for payment 2		Fri Aug 24 2012 1:00pm
Registered mail for 90 Days		Thu Dec 27 2012 5:00pm
- Additional Contacts:** 2 Other Contacts
- Activity History:** 2 Activities Added Today

Improves customer communications via electronic billing reminders and invoices. And, it automates numerous time-consuming tasks.

Provides Customer billing communications management, installment payments, and tracking which combine to reduce delinquent accounts for customers.

Sage Inventory Advisor

Dashboard Locations Forecasting Orders Suppliers Stock enquiry Settings

Product code Description	Ideal Amended	Cost Amended	Value EAD	Class Velocity	Policy	Demand
BCS3030 Spring Brake 30/30 Quickstop Abxxxx C Standard	1,065 units 1065	29.69 29.69	31,625 0.0ft ³ 25 Dec 2012	AH Potential s/e	LT 90d 2.8ku SS 62d 1.9ku RC 30d 938u O/H 78d 2.4ku O/O 54d 2.0ku B/O - 210u	1.5k Avg sales: 847.4 Avg FC: 1.1k PTD sales: 216 Age: 34
NCQ1004Q Brake Shoe Unlined 4515h (q) Fbxxxx K Standard	1,082 units 1082	11.04 11.04	11,942 0.0ft ³ 25 Dec 2012	AH OK	LT 90d 1.2ku SS 42d 580u RC 30d 406u O/H 26d 344u O/O 87d 700u B/O - 0u	2.2k Avg sales: 125.9 Avg FC: 268.2 PTD sales: 0 Age: 51
NCQ2000 Brake Shoe Unlined Bc/36/1 Fbxxxx K Standard	92 units 92	11.85 11.85	1,090 0.0ft ³ 25 Dec 2012	BM OK	LT 90d 124u SS 31d 43u RC 45d 61u O/H 99d 136u O/O 0d 0u B/O - 0u	658 Avg sales: 37.0 Avg FC: 42.0 PTD sales: 0 Age: 51
NCT1004PRK Brake Shoe & Hardware Kit 4515h (p) Fbxxxx K Standard	767 units 767	48.65 48.65	37,315 0.0ft ³ 25 Dec 2012	AH	LT 90d 1.0ku SS 66d 1.1ku RC 30d 614u	915 Avg sales: 847.4 Avg FC: 1.1k PTD sales: 216 Age: 34

Download Archive Add

Created by System Administrator
Created on 16 Sep 2012
Location ABC Warehouse
Supplier SORL Auto Parts Group (Australia)

	Recommended	Amended	Difference
Line count	6	6	0
Order units	3,370	3,370	0
Order value	101,682	101,682	0
Order volume (ft ³)	0	0	0



Questions & Contact

- www.Sage100ERP.com/2013release - Released December 2012!
- Quarterly Product Updates
- Sage 100 ERP 2014 Release – Planned for November 2013



acutedata

800.761.3037 acutedata.com

